

## Product datasheet for **TA311634**

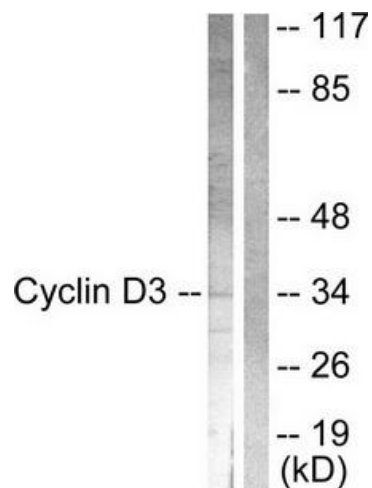
### Cyclin D3 (CCND3) Rabbit Polyclonal Antibody

#### Product data:

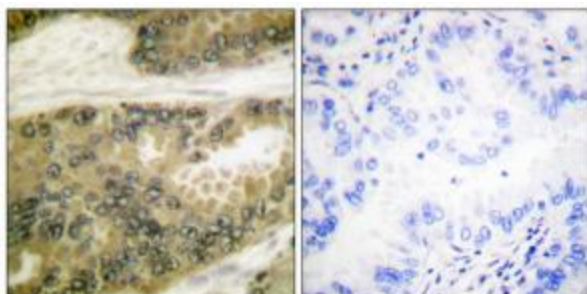
Product Type:	Primary Antibodies
Applications:	IHC, WB
Recommended Dilution:	WB: 1:500~1:3000, IHC: 1:50~1:100, ELISA: 1:5000
Reactivity:	Human, Mouse, Rat
Host:	Rabbit
Isotype:	IgG
Clonality:	Polyclonal
Immunogen:	The antiserum was produced against synthesized non-phosphopeptide derived from human Cyclin D3 around the phosphorylation site of threonine 283 (T-S-TP-P-T).
Formulation:	Phosphate buffered saline (without Mg <sup>2+</sup> and Ca <sup>2+</sup> ), pH 7.4, 150mM NaCl, 0.02% sodium azide and 50% glycerol.
Concentration:	lot specific
Purification:	The antibody was affinity-purified from rabbit antiserum by affinity-chromatography using epitope-specific immunogen.
Conjugation:	Unconjugated
Storage:	Store at -20°C as received.
Stability:	Stable for 12 months from date of receipt.
Gene Name:	cyclin D3
Database Link:	<a href="#">NP_001129489</a> <a href="#">Entrez Gene 12445 Mouse</a> <a href="#">Entrez Gene 25193 Rat</a> <a href="#">Entrez Gene 896 Human</a> <a href="#">P30281</a>
Synonyms:	cyclin D3; D3-type cyclin; G1; OTTHUMP00000016390; S-specific cyclin D3
Note:	Cyclin D3 (Ab-283) antibody detects endogenous levels of total Cyclin D3 protein.
Protein Families:	Druggable Genome
Protein Pathways:	Cell cycle, Focal adhesion, Jak-STAT signaling pathway, p53 signaling pathway, Wnt signaling pathway



[View online »](#)

**Product images:**

Western blot analysis of extracts from COS7 cells, treated with Forskolin (40nM, 30mins), using Cyclin D3 (Ab-283) antibody. The lane on the right is treated with the synthesized peptide.



Immunohistochemical analysis of paraffin-embedded human lung carcinoma tissue using Cyclin D3 (Ab-283) antibody. The picture on the right is treated with the synthesized peptide.