

## Product datasheet for **TA311633**

### Serum Response Factor (SRF) Rabbit Polyclonal Antibody

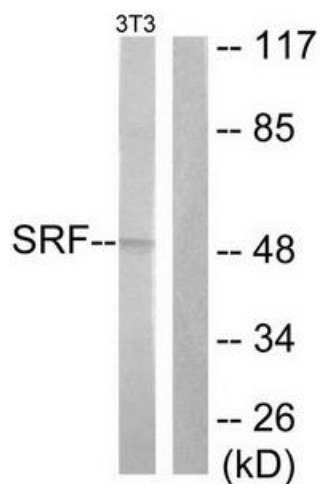
#### Product data:

Product Type:	Primary Antibodies
Applications:	IHC, WB
Recommended Dilution:	WB: 1:500~1000, IHC: 1:50~100, ELISA: 1:5000
Reactivity:	Human, Mouse, Rat
Host:	Rabbit
Isotype:	IgG
Clonality:	Polyclonal
Immunogen:	The antiserum was produced against synthesized non-phosphopeptide derived from human SRF around the phosphorylation site of serine 99 (S-L-S-E-M).
Formulation:	Phosphate buffered saline (without Mg <sup>2+</sup> and Ca <sup>2+</sup> ), pH 7.4, 150mM NaCl, 0.02% sodium azide and 50% glycerol.
Concentration:	lot specific
Purification:	The antibody was affinity-purified from rabbit antiserum by affinity-chromatography using epitope-specific immunogen.
Conjugation:	Unconjugated
Storage:	Store at -20°C as received.
Stability:	Stable for 12 months from date of receipt.
Gene Name:	serum response factor
Database Link:	<a href="#">NP_003122</a> <a href="#">Entrez Gene 20807 MouseEntrez Gene 501099 RatEntrez Gene 6722 Human P11831</a>
Synonyms:	MCM1
Note:	SRF (Ab-99) antibody detects endogenous levels of total SRF protein.
Protein Families:	Druggable Genome, Transcription Factors
Protein Pathways:	MAPK signaling pathway

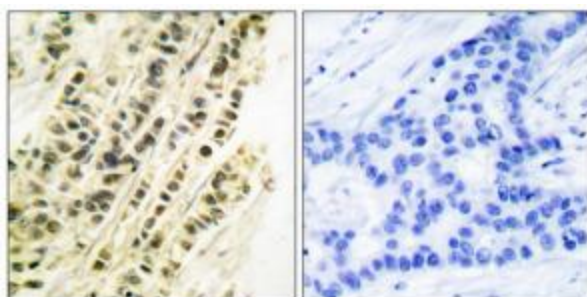


[View online »](#)

## Product images:



Western blot analysis of extracts from NIH/3T3 cells treated with PMA (125ng/ml, 30mins), using SRF (Ab-99) antibody (#TA311633). The lane on the right is treated with the synthesized peptide.



Immunohistochemical analysis of paraffin-embedded human breast carcinoma tissue using SRF (Ab-99) antibody (#TA311633). The picture on the right is treated with the synthesized peptide.