

Product datasheet for **TA311627**

SOX9 Rabbit Polyclonal Antibody

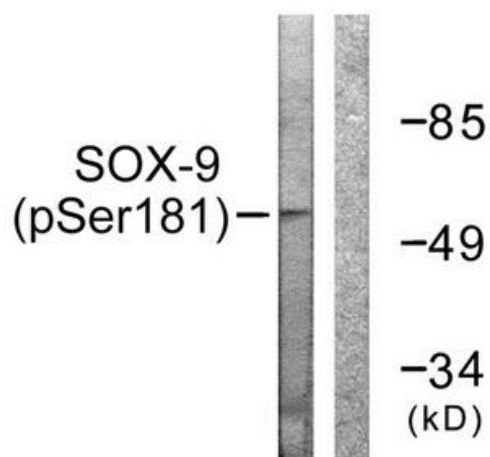
Product data:

Product Type:	Primary Antibodies
Applications:	IF, IHC, WB
Recommended Dilution:	WB: 1:500~1:3000, IHC: 1:50~1:100, IF: 1:100~1:500, ELISA: 1:1000
Reactivity:	Human, Mouse
Modifications:	Phospho-specific
Host:	Rabbit
Isotype:	IgG
Clonality:	Polyclonal
Immunogen:	The antiserum was produced against synthesized phosphopeptide derived from human SOX-9 around the phosphorylation site of serine 181 (R-K-SP-V-K).
Formulation:	Phosphate buffered saline (without Mg ²⁺ and Ca ²⁺), pH 7.4, 150mM NaCl, 0.02% sodium azide and 50% glycerol.
Concentration:	lot specific
Purification:	The antibody was affinity-purified from rabbit antiserum by affinity-chromatography using epitope-specific immunogen.
Conjugation:	Unconjugated
Storage:	Store at -20°C as received.
Stability:	Stable for 12 months from date of receipt.
Gene Name:	SRY-box 9
Database Link:	NP_000337 Entrez Gene 20682 Mouse Entrez Gene 6662 Human P48436
Synonyms:	CMD1; CMPD1; SRA1; SRXX2; SRXY10
Note:	SOX-9 (Phospho-Ser181) antibody detects endogenous levels of SOX-9 only when phosphorylated at serine 181.
Protein Families:	Adult stem cells, Druggable Genome, Embryonic stem cells, ES Cell Differentiation/IPS, Induced pluripotent stem cells, Transcription Factors

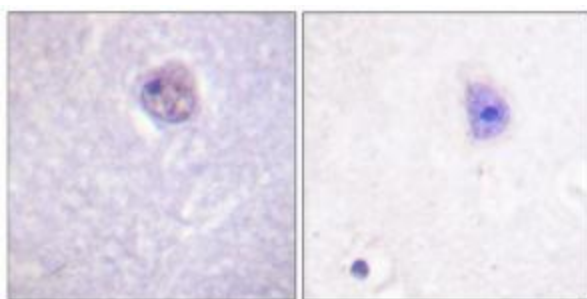


[View online »](#)

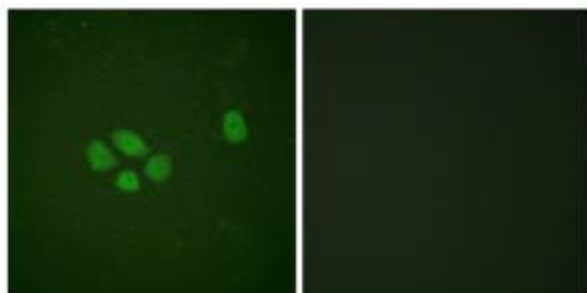
Product images:



Western blot analysis of extracts from 293 cells, treated with PBS (60mins), using SOX-9 (Phospho-Ser181) antibody. The lane on the right is treated with the synthesized peptide.



Immunohistochemistry analysis of paraffin-embedded human brain tissue using SOX-9 (Phospho-Ser181) antibody. The picture on the right is treated with the synthesized peptide.



Immunofluorescence analysis of A549 cells, using SOX-9 (Phospho-Ser181) antibody. The picture on the right is treated with the synthesized peptide.