

## Product datasheet for **TA311625**

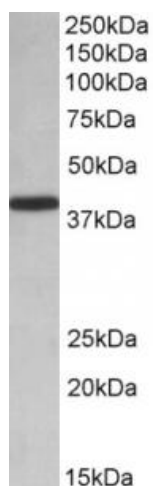
### PCBP1 Goat Polyclonal Antibody

#### Product data:

Product Type:	Primary Antibodies
Applications:	WB
Recommended Dilution:	WB: 0.01-0.03ug/ml
Reactivity:	Human (Expected from sequence similarity: Mouse, Rat, Dog, Pig, Cow)
Host:	Goat
Clonality:	Polyclonal
Immunogen:	Peptide with sequence C-ADLAKLNQVARQQSH, from the internal region of the protein sequence according to CAA55016.1.
Formulation:	Supplied at 0.5 mg/ml in Tris saline, 0.02% sodium azide, pH7.3 with 0.5% bovine serum albumin. Aliquot and store at -20C. Minimize freezing and thawing.
Concentration:	lot specific
Purification:	Purified from goat serum by ammonium sulphate precipitation followed by antigen affinity chromatography using the immunizing peptide.
Conjugation:	Unconjugated
Storage:	Store at -20°C as received.
Stability:	Stable for 12 months from date of receipt.
Gene Name:	poly(rC) binding protein 1
Database Link:	<a href="#">NP_006187</a> <a href="#">Entrez Gene 23983 Mouse</a> <a href="#">Entrez Gene 500242 Rat</a> <a href="#">Entrez Gene 481417 Dog</a> <a href="#">Entrez Gene 5093 Human</a> <a href="#">Q15365</a>
Synonyms:	HEL-S-85; hnRNP-E1; hnRNP-X; HNRPE1; HNRPX
Protein Pathways:	Spliceosome



[View online »](#)

**Product images:**

(0.01ug/ml) staining of HeLa lysate (35ug protein in RIPA buffer). Primary incubation was 1 hour. Detected by chemiluminescence.