

Product datasheet for **TA311622**

NDRG2 Goat Polyclonal Antibody

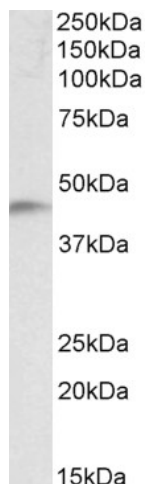
Product data:

Product Type:	Primary Antibodies
Applications:	WB
Recommended Dilution:	WB: 0.1-0.3 µg/ml.
Reactivity:	Human, Mouse, Rat (Expected from sequence similarity: Dog)
Host:	Goat
Clonality:	Polyclonal
Immunogen:	Peptide with sequence KEAELAARILLDQGQ-C, from the N Terminus (near) of the protein sequence according to NP_963293.1.
Formulation:	Supplied at 0.5 mg/ml in Tris saline, 0.02% sodium azide, pH7.3 with 0.5% bovine serum albumin. Aliquot and store at -20C. Minimize freezing and thawing.
Concentration:	lot specific
Purification:	Purified from goat serum by ammonium sulphate precipitation followed by antigen affinity chromatography using the immunizing peptide.
Conjugation:	Unconjugated
Storage:	Store at -20°C as received.
Stability:	Stable for 12 months from date of receipt.
Gene Name:	NDRG family member 2
Database Link:	NP_963293 Entrez Gene 29811 Mouse Entrez Gene 171114 Rat Entrez Gene 609390 Dog Entrez Gene 57447 Human Q9UN36
Synonyms:	SYLD

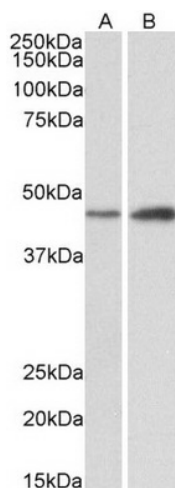


[View online »](#)

Product images:



TA311622 (0.1 ug/ml) staining of Human Temporal Cortex lysate (35 ug protein in RIPA buffer). Primary incubation was 1 hour. Detected by chemiluminescence.



TA311622 (0.3 ug/ml) staining of Mouse (A) and Rat (B) Brain lysates (35 ug protein in RIPA buffer). Primary incubation was 1 hour. Detected by chemiluminescence.