

## Product datasheet for **TA311621**

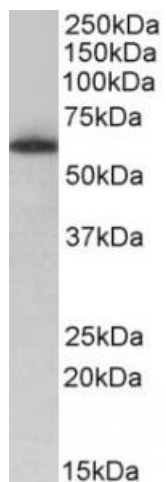
### TH1L (NELFCD) Goat Polyclonal Antibody

#### Product data:

Product Type:	Primary Antibodies
Applications:	WB
Recommended Dilution:	WB: 0.5-2ug/ml
Reactivity:	Human (Expected from sequence similarity: Mouse, Dog, Cow, Pig)
Host:	Goat
Clonality:	Polyclonal
Immunogen:	Peptide with sequence C-NKRVSINKDE, from the internal region of the protein sequence according to NP_945327.1.
Formulation:	Supplied at 0.5 mg/ml in Tris saline, 0.02% sodium azide, pH7.3 with 0.5% bovine serum albumin. Aliquot and store at -20C. Minimize freezing and thawing.
Concentration:	lot specific
Purification:	Purified from goat serum by ammonium sulphate precipitation followed by antigen affinity chromatography using the immunizing peptide.
Conjugation:	Unconjugated
Storage:	Store at -20°C as received.
Stability:	Stable for 12 months from date of receipt.
Gene Name:	negative elongation factor complex member C/D
Database Link:	<a href="#">NP_945327</a> <a href="#">Entrez Gene 57314 Mouse</a> <a href="#">Entrez Gene 477276 Dog</a> <a href="#">Entrez Gene 51497 Human</a> <a href="#">Q8IXH7</a>
Synonyms:	HSPC130; NELF-C; NELF-D; TH1; TH1L
Protein Families:	Transcription Factors



[View online »](#)

**Product images:**

(0.5ug/ml) staining of nuclear Jurkat lysate (35ug protein in RIPA buffer). Primary incubation was 1 hour. Detected by chemiluminescence.