

Product datasheet for **TA311617**

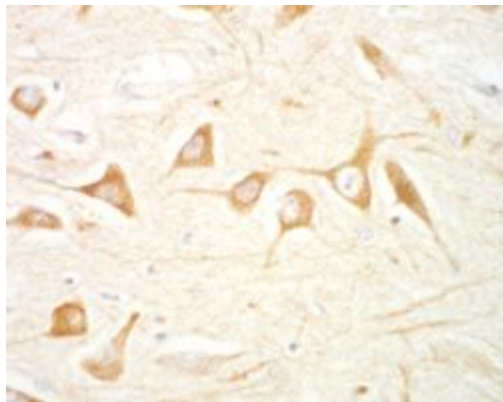
LRRK2 Goat Polyclonal Antibody

Product data:

Product Type:	Primary Antibodies
Applications:	IF, PEP-ELISA
Recommended Dilution:	ELISA:1:64000.WB:0.3-1µg/ml.IHC:2µg/ml.
Reactivity:	Human (Expected from sequence similarity: Cow)
Host:	Goat
Clonality:	Polyclonal
Immunogen:	Peptide with sequence CELAEKMRRTSV, from the internal region (near the C Terminus) of the protein sequence according to NP_940980.3.
Formulation:	Supplied at 0.5 mg/ml in Tris saline, 0.02% sodium azide, pH7.3 with 0.5% bovine serum albumin. Aliquot and store at -20C. Minimize freezing and thawing.
Concentration:	lot specific
Purification:	Purified from goat serum by ammonium sulphate precipitation followed by antigen affinity chromatography using the immunizing peptide.
Conjugation:	Unconjugated
Storage:	Store at -20°C as received.
Stability:	Stable for 12 months from date of receipt.
Gene Name:	leucine-rich repeat kinase 2
Database Link:	NP_940980 Entrez Gene 120892 Human Q5S007
Synonyms:	AURA17; DARDARIN; PARK8; RIPK7; ROCO2
Protein Families:	Druggable Genome, Protein Kinase
Protein Pathways:	Parkinson's disease



[View online »](#)

Product images:

(1.5ug/ml) staining of paraffin embedded Human Hippocampus CA4. Microwaved antigen retrieval with citrate buffer pH 6, HRP-staining.