

Product datasheet for **TA311616**

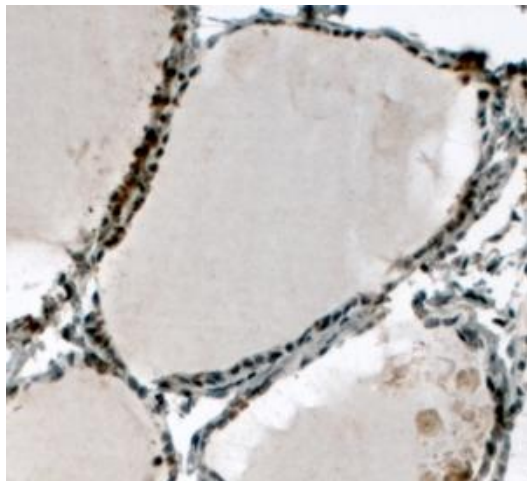
ELF5 Goat Polyclonal Antibody

Product data:

Product Type:	Primary Antibodies
Applications:	IHC
Recommended Dilution:	WB: 1ug/ml, IHC: 4-8ug/ml
Reactivity:	Human (Expected from sequence similarity: Mouse, Rat)
Host:	Goat
Clonality:	Polyclonal
Immunogen:	Peptide with sequence C-GKNAHGWQEDKL, from the C Terminus of the protein sequence according to NP_938195.1; NP_001413.1.
Formulation:	Supplied at 0.5 mg/ml in Tris saline, 0.02% sodium azide, pH7.3 with 0.5% bovine serum albumin. Aliquot and store at -20C. Minimize freezing and thawing.
Concentration:	lot specific
Purification:	Purified from goat serum by ammonium sulphate precipitation followed by antigen affinity chromatography using the immunizing peptide.
Conjugation:	Unconjugated
Storage:	Store at -20°C as received.
Stability:	Stable for 12 months from date of receipt.
Gene Name:	E74 like ETS transcription factor 5
Database Link:	NP_938195 Entrez Gene 13711 Mouse Entrez Gene 366142 Rat Entrez Gene 2001 Human Q9UKW6
Synonyms:	ESE2
Protein Families:	Transcription Factors



[View online »](#)

Product images:

(4ug/ml) staining of paraffin embedded Human Thyroid Gland. Steamed antigen retrieval with citrate buffer pH 6, HRP-staining.