

Product datasheet for **TA311605**

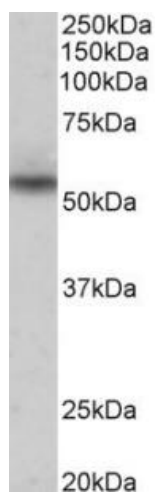
NPRL3 Goat Polyclonal Antibody

Product data:

Product Type:	Primary Antibodies
Applications:	WB
Recommended Dilution:	WB: 0.3-1ug/ml
Reactivity:	Human (Expected from sequence similarity: Mouse, Rat)
Host:	Goat
Clonality:	Polyclonal
Immunogen:	Peptide with sequence C-QRSQEHPASQTNKP, from the internal region (N Terminus) of the protein sequence according to NP_853547.1.
Formulation:	Supplied at 0.5 mg/ml in Tris saline, 0.02% sodium azide, pH7.3 with 0.5% bovine serum albumin. Aliquot and store at -20C. Minimize freezing and thawing.
Concentration:	lot specific
Purification:	Purified from goat serum by ammonium sulphate precipitation followed by antigen affinity chromatography using the immunizing peptide.
Conjugation:	Unconjugated
Storage:	Store at -20°C as received.
Stability:	Stable for 12 months from date of receipt.
Gene Name:	NPR3 like, GATOR1 complex subunit
Database Link:	NP_036207 Entrez Gene 17168 Mouse Entrez Gene 360505 Rat Entrez Gene 8131 Human Q12980
Synonyms:	CGTHBA; chromosome 16 open reading frame 35; conserved gene telomeric to alpha globin cluster



[View online »](#)

Product images:

(0.3ug/ml) staining of Human Heart lysate (35ug protein in RIPA buffer). Primary incubation was 1 hour. Detected by chemiluminescence.