

Product datasheet for **TA311600**

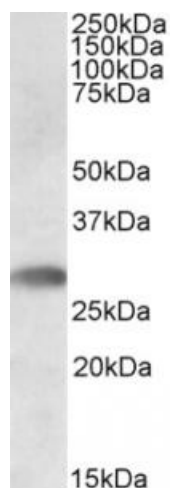
TREML1 Goat Polyclonal Antibody

Product data:

Product Type:	Primary Antibodies
Applications:	WB
Recommended Dilution:	WB: 0.3-1ug/ml
Reactivity:	Human
Host:	Goat
Clonality:	Polyclonal
Immunogen:	Peptide with sequence CGPAQNPPNNQTPS, from the C Terminus of the protein sequence according to NP_835468.1.
Formulation:	Supplied at 0.5 mg/ml in Tris saline, 0.02% sodium azide, pH7.3 with 0.5% bovine serum albumin. Aliquot and store at -20C. Minimize freezing and thawing.
Concentration:	lot specific
Purification:	Purified from goat serum by ammonium sulphate precipitation followed by antigen affinity chromatography using the immunizing peptide.
Conjugation:	Unconjugated
Storage:	Store at -20°C as received.
Stability:	Stable for 12 months from date of receipt.
Gene Name:	triggering receptor expressed on myeloid cells like 1
Database Link:	NP_835468 Entrez Gene 340205 Human Q86YW5
Synonyms:	dj238O23.3; GLTL1825; PRO3438; TLT-1; TLT1
Protein Families:	Druggable Genome, Transmembrane



[View online »](#)

Product images:

staining (0.5ug/ml) of Human Bone Marrow lysate (RIPA buffer, 35ug total protein per Lane). Primary incubated for 1 hour. Detected by western blot using chemiluminescence.