

Product datasheet for **TA311586**

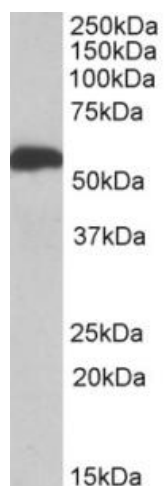
ALDH5A1 Goat Polyclonal Antibody

Product data:

Product Type:	Primary Antibodies
Applications:	WB
Recommended Dilution:	WB: 1-3ug/ml
Reactivity:	Human, Mouse, Rat (Expected from sequence similarity: Dog, Cow)
Host:	Goat
Clonality:	Polyclonal
Immunogen:	Peptide with sequence C-TGKILLHHAANS, from the internal region of the protein sequence according to NP_733936.1; NP_001071.1.
Formulation:	Supplied at 0.5 mg/ml in Tris saline, 0.02% sodium azide, pH7.3 with 0.5% bovine serum albumin. Aliquot and store at -20C. Minimize freezing and thawing.
Concentration:	lot specific
Purification:	Purified from goat serum by ammonium sulphate precipitation followed by antigen affinity chromatography using the immunizing peptide.
Conjugation:	Unconjugated
Storage:	Store at -20°C as received.
Stability:	Stable for 12 months from date of receipt.
Gene Name:	aldehyde dehydrogenase 5 family member A1
Database Link:	NP_733936 Entrez Gene 214579 Mouse Entrez Gene 291133 Rat Entrez Gene 488246 Dog Entrez Gene 7915 Human P51649
Synonyms:	SSADH; SSDH
Protein Families:	Druggable Genome
Protein Pathways:	Alanine, aspartate and glutamate metabolism, Butanoate metabolism, Metabolic pathways



[View online »](#)

Product images:

(1ug/ml) staining of Human Liver lysate (35ug protein in RIPA buffer). Primary incubation was 1 hour. Detected by chemiluminescence.