

## Product datasheet for **TA311585**

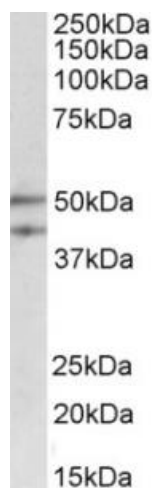
### MEIS2 Goat Polyclonal Antibody

#### Product data:

Product Type:	Primary Antibodies
Applications:	WB
Recommended Dilution:	WB: 0.3-1ug/ml
Reactivity:	Mouse, Rat (Expected from sequence similarity: Human, Dog, Cow)
Host:	Goat
Clonality:	Polyclonal
Immunogen:	Peptide with sequence C-QSNRAGFLLDPSVSQ, from the internal region of the protein sequence according to NP_733777.1; NP_733775.1; NP_758526.1.
Formulation:	Supplied at 0.5 mg/ml in Tris saline, 0.02% sodium azide, pH7.3 with 0.5% bovine serum albumin. Aliquot and store at -20C. Minimize freezing and thawing.
Concentration:	lot specific
Purification:	Purified from goat serum by ammonium sulphate precipitation followed by antigen affinity chromatography using the immunizing peptide.
Conjugation:	Unconjugated
Storage:	Store at -20°C as received.
Stability:	Stable for 12 months from date of receipt.
Gene Name:	Meis homeobox 2
Database Link:	<a href="#">NP_733777</a> <a href="#">Entrez Gene 17536 Mouse</a> <a href="#">Entrez Gene 311311 Rat</a> <a href="#">Entrez Gene 612759 Dog</a> <a href="#">Entrez Gene 4212 Human</a> <a href="#">O14770</a>
Synonyms:	HsT18361; MRG1
Protein Families:	Transcription Factors



[View online »](#)

**Product images:**

(0.3ug/ml) staining of Rat Thymus lysate (35ug protein in RIPA buffer). Primary incubation was 1 hour. Detected by chemiluminescence.