

Product datasheet for **TA311583**

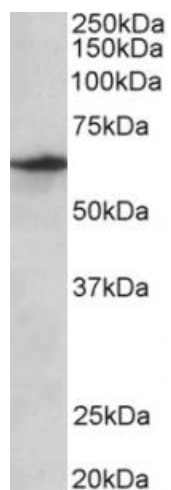
SLC47A2 Goat Polyclonal Antibody

Product data:

Product Type:	Primary Antibodies
Applications:	WB
Recommended Dilution:	WB: 0.1-1ug/ml
Reactivity:	Human
Host:	Goat
Clonality:	Polyclonal
Immunogen:	Peptide with sequence SECHVDFFRTPEEAH, from the internal region (near C terminus) of the protein sequence according to NP_690872.2; NP_001093116.1.
Formulation:	Supplied at 0.5 mg/ml in Tris saline, 0.02% sodium azide, pH7.3 with 0.5% bovine serum albumin. Aliquot and store at -20C. Minimize freezing and thawing.
Concentration:	lot specific
Purification:	Purified from goat serum by ammonium sulphate precipitation followed by antigen affinity chromatography using the immunizing peptide.
Conjugation:	Unconjugated
Storage:	Store at -20°C as received.
Stability:	Stable for 12 months from date of receipt.
Gene Name:	solute carrier family 47 member 2
Database Link:	NP_690872 Entrez Gene 146802 Human Q86VL8
Synonyms:	MATE2; MATE2-B; MATE2-K; MATE2K
Protein Families:	Transmembrane



[View online »](#)

Product images:

(0.3ug/ml) staining of Human Testis lysate (35ug protein in RIPA buffer). Primary incubation was 1 hour. Detected by chemiluminescence.