

Product datasheet for **TA311573**

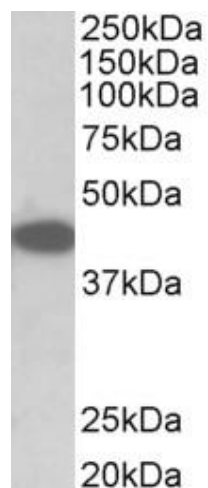
Trib1 Goat Polyclonal Antibody

Product data:

Product Type:	Primary Antibodies
Applications:	WB
Recommended Dilution:	WB: 0.1-0.3ug/ml
Reactivity:	Mouse (Expected from sequence similarity: Human, Rat, Dog, Cow)
Host:	Goat
Clonality:	Polyclonal
Immunogen:	Peptide with sequence PEHVSPKARCLIRS, from the internal region of the protein sequence according to NP_653132.1.
Formulation:	Supplied at 0.5 mg/ml in Tris saline, 0.02% sodium azide, pH7.3 with 0.5% bovine serum albumin. Aliquot and store at -20C. Minimize freezing and thawing.
Concentration:	lot specific
Purification:	Purified from goat serum by ammonium sulphate precipitation followed by antigen affinity chromatography using the immunizing peptide.
Conjugation:	Unconjugated
Storage:	Store at -20°C as received.
Stability:	Stable for 12 months from date of receipt.
Gene Name:	tribbles pseudokinase 1
Database Link:	NP_653132 Entrez Gene 10221 Human Entrez Gene 78969 Rat Entrez Gene 482039 Dog Entrez Gene 211770 Mouse Q8K4K4
Synonyms:	C8FW; GIG-2; GIG2; SKIP1; TRB-1; TRB1



[View online »](#)

Product images:

(0.1ug/ml) staining of NIH3T3 lysate (35ug protein in RIPA buffer). Primary incubation was 1 hour. Detected by chemiluminescence.