

Product datasheet for **TA311571**

DYDC1 Goat Polyclonal Antibody

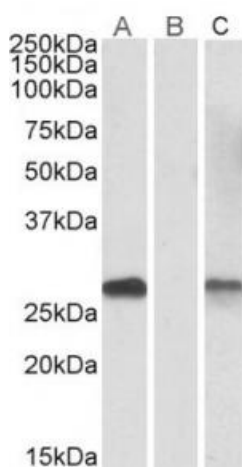
Product data:

Product Type:	Primary Antibodies
Applications:	WB
Recommended Dilution:	WB: 0.1-1ug/ml
Reactivity:	Human, Mouse, Rat (Expected from sequence similarity: Cow)
Host:	Goat
Clonality:	Polyclonal
Immunogen:	Peptide with sequence C-TLAEISDRYGAPN, from the internal region of the protein sequence according to NP_620167.1.
Formulation:	Supplied at 0.5 mg/ml in Tris saline, 0.02% sodium azide, pH7.3 with 0.5% bovine serum albumin. Aliquot and store at -20C. Minimize freezing and thawing.
Concentration:	lot specific
Purification:	Purified from goat serum by ammonium sulphate precipitation followed by antigen affinity chromatography using the immunizing peptide.
Conjugation:	Unconjugated
Storage:	Store at -20°C as received.
Stability:	Stable for 12 months from date of receipt.
Gene Name:	DPY30 domain containing 1
Database Link:	NP_620167 Entrez Gene 69496 Mouse Entrez Gene 688433 Rat Entrez Gene 143241 Human Q8WWB3
Synonyms:	DPY30D1



[View online »](#)

Product images:



Lane A - TA311571 (1ug/ml) staining of HEK293 overexpressing Human DYDC1 lysate (10ug protein in RIPA buffer). Lane B - TA311571 (0.1ug/ml) staining of HEK293 mock-transfected lysate (10ug protein in RIPA buffer). Lane C - anti-MYC Tag (1:1000) staining HEK293 overexpressing Human DYDC1 lysate (10ug protein in RIPA buffer). Primary incubations were for 1 hour. Detected by chemiluminescence.