

Product datasheet for **TA311568**

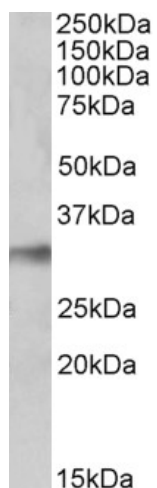
NEK7 Goat Polyclonal Antibody

Product data:

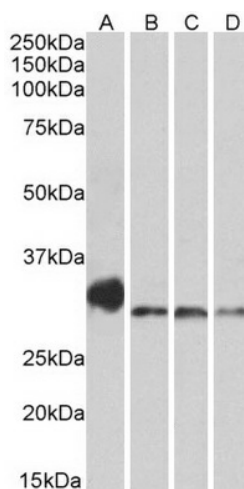
Product Type:	Primary Antibodies
Applications:	WB
Recommended Dilution:	WB: 0.1-0.3 µg/ml.
Reactivity:	Human, Mouse, Rat (Expected from sequence similarity: Dog, Cow)
Host:	Goat
Clonality:	Polyclonal
Immunogen:	Peptide with sequence CINPDPEKRPDVT, from the C Terminus of the protein sequence according to NP_598001.1.
Formulation:	Supplied at 0.5 mg/ml in Tris saline, 0.02% sodium azide, pH7.3 with 0.5% bovine serum albumin. Aliquot and store at -20C. Minimize freezing and thawing.
Concentration:	lot specific
Purification:	Purified from goat serum by ammonium sulphate precipitation followed by antigen affinity chromatography using the immunizing peptide.
Conjugation:	Unconjugated
Storage:	Store at -20°C as received.
Stability:	Stable for 12 months from date of receipt.
Gene Name:	NIMA related kinase 7
Database Link:	NP_598001 Entrez Gene 59125 Mouse Entrez Gene 360850 Rat Entrez Gene 480008 Dog Entrez Gene 140609 Human Q8TDX7
Synonyms:	NIMA (never in mitosis gene a)-related kinase 7; NIMA-related kinase 7; OTTHUMP00000033680
Protein Families:	Druggable Genome, Protein Kinase



[View online »](#)

Product images:


TA311568 (0.1 ug/ml) staining of Human Lung lysate (35 ug protein in RIPA buffer). Primary incubation was 1 hour. Detected by chemiluminescence.



TA311568 (0.3 ug/ml) staining of Mouse Lung (A), Mouse Testis (B), Rat Lung (C) and Rat Testis (D) lysates (35 ug protein in RIPA buffer). Primary incubation was 1 hour. Detected by chemiluminescence.