

Product datasheet for **TA311564**

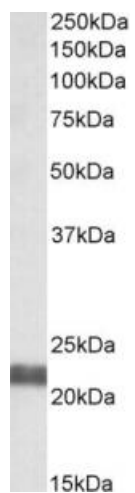
Ube2f Goat Polyclonal Antibody

Product data:

Product Type:	Primary Antibodies
Applications:	WB
Recommended Dilution:	WB: 0.05-0.2ug/ml
Reactivity:	Rat (Expected from sequence similarity: Human, Mouse, Dog, Pig, Cow)
Host:	Goat
Clonality:	Polyclonal
Immunogen:	Peptide with sequence SKLKRDDGLKGSRT-C, from the N Terminus of the protein sequence according to NP_542409.1.
Formulation:	Supplied at 0.5 mg/ml in Tris saline, 0.02% sodium azide, pH7.3 with 0.5% bovine serum albumin. Aliquot and store at -20C. Minimize freezing and thawing.
Concentration:	lot specific
Purification:	Purified from goat serum by ammonium sulphate precipitation followed by antigen affinity chromatography using the immunizing peptide.
Conjugation:	Unconjugated
Storage:	Store at -20°C as received.
Stability:	Stable for 12 months from date of receipt.
Gene Name:	ubiquitin-conjugating enzyme E2F (putative)
Database Link:	NP_001008382 Entrez Gene 67921 Mouse Entrez Gene 140739 Human Entrez Gene 477421 Dog Entrez Gene 363284 Rat Q5U203
Synonyms:	MGC18120; NCE2



[View online »](#)

Product images:

(0.05ug/ml) staining of Rat Pancreas lysate (35ug protein in RIPA buffer). Primary incubation was 1 hour. Detected by chemiluminescence.