

Product datasheet for **TA311562**

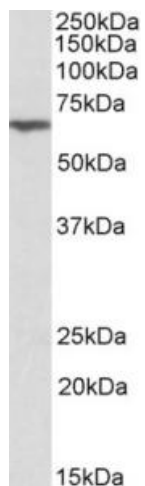
ANTXR2 Goat Polyclonal Antibody

Product data:

Product Type:	Primary Antibodies
Applications:	WB
Recommended Dilution:	WB: 0.3-1ug/ml
Reactivity:	Human, Mouse, Rat (Expected from sequence similarity: Dog, Cow)
Host:	Goat
Clonality:	Polyclonal
Immunogen:	Peptide with sequence C-HEGLKLANEQIQK, from the internal region of the protein sequence according to NP_477520.2; NP_001139266.1.
Formulation:	Supplied at 0.5 mg/ml in Tris saline, 0.02% sodium azide, pH7.3 with 0.5% bovine serum albumin. Aliquot and store at -20C. Minimize freezing and thawing.
Concentration:	lot specific
Purification:	Purified from goat serum by ammonium sulphate precipitation followed by antigen affinity chromatography using the immunizing peptide.
Conjugation:	Unconjugated
Storage:	Store at -20°C as received.
Stability:	Stable for 12 months from date of receipt.
Gene Name:	anthrax toxin receptor 2
Database Link:	NP_477520 Entrez Gene 71914 Mouse Entrez Gene 305633 Rat Entrez Gene 487821 Dog Entrez Gene 118429 Human P58335
Synonyms:	CMG-2; CMG2; HFS; ISH; JHF
Protein Families:	Druggable Genome, Transmembrane



[View online »](#)

Product images:

(0.3ug/ml) staining of Mouse Kidney lysate (35ug protein in RIPA buffer). Primary incubation was 1 hour. Detected by chemiluminescence.