

Product datasheet for **TA311559**

Myosin light chain kinase (MYLK) Goat Polyclonal Antibody

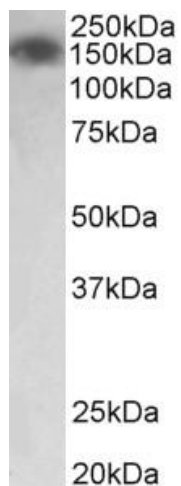
Product data:

Product Type:	Primary Antibodies
Applications:	WB
Recommended Dilution:	WB: 0.01-0.03ug/ml
Reactivity:	Human (Expected from sequence similarity: Mouse)
Host:	Goat
Clonality:	Polyclonal
Immunogen:	Peptide with sequence C-KDTKNMEAKKLSKD, from the internal region of the protein sequence according to NP_444253.3; NP_444254.3 ; NP_444255.3; NP_444256.3.
Formulation:	Supplied at 0.5 mg/ml in Tris saline, 0.02% sodium azide, pH7.3 with 0.5% bovine serum albumin. Aliquot and store at -20C. Minimize freezing and thawing.
Concentration:	lot specific
Purification:	Purified from goat serum by ammonium sulphate precipitation followed by antigen affinity chromatography using the immunizing peptide.
Conjugation:	Unconjugated
Storage:	Store at -20°C as received.
Stability:	Stable for 12 months from date of receipt.
Gene Name:	myosin light chain kinase
Database Link:	NP_444253 Entrez Gene 107589 Mouse Entrez Gene 4638 Human Q15746
Synonyms:	AAT7; KRP; MLCK; MLCK1; MLCK108; MLCK210; MSTP083; MYLK1; smMLCK
Protein Families:	Druggable Genome, Protein Kinase
Protein Pathways:	Calcium signaling pathway, Focal adhesion, Regulation of actin cytoskeleton, Vascular smooth muscle contraction



[View online »](#)

Product images:



(0.03ug/ml) staining of Human Colon lysate (35ug protein in RIPA buffer). Primary incubation was 1 hour. Detected by chemiluminescence.