

Product datasheet for **TA311556**

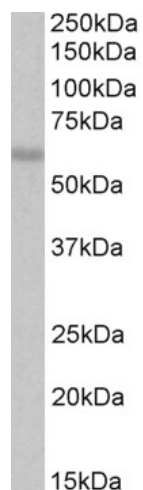
CREB3L1 Goat Polyclonal Antibody

Product data:

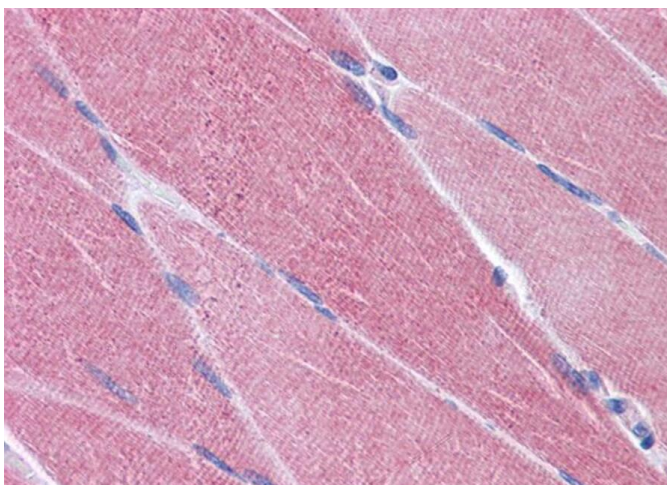
Product Type:	Primary Antibodies
Applications:	IHC, WB
Recommended Dilution:	WB: 1-3ug/ml IHC: 3.75µg/ml
Reactivity:	Human (Expected from sequence similarity: Mouse, Rat)
Host:	Goat
Clonality:	Polyclonal
Immunogen:	Peptide with sequence C-DFSHSKEWFHDRD, from the C Terminus of the protein sequence according to NP_443086.1.
Formulation:	Supplied at 0.5 mg/ml in Tris saline, 0.02% sodium azide, pH7.3 with 0.5% bovine serum albumin. Aliquot and store at -20C. Minimize freezing and thawing.
Concentration:	lot specific
Purification:	Purified from goat serum by ammonium sulphate precipitation followed by antigen affinity chromatography using the immunizing peptide.
Conjugation:	Unconjugated
Storage:	Store at -20°C as received.
Stability:	Stable for 12 months from date of receipt.
Gene Name:	cAMP responsive element binding protein 3-like 1
Database Link:	NP_443086 Entrez Gene 26427 Mouse Entrez Gene 362165 Rat Entrez Gene 90993 Human Q96BA8
Synonyms:	OASIS
Protein Families:	Transcription Factors
Protein Pathways:	Huntington's disease, Melanogenesis, Prostate cancer



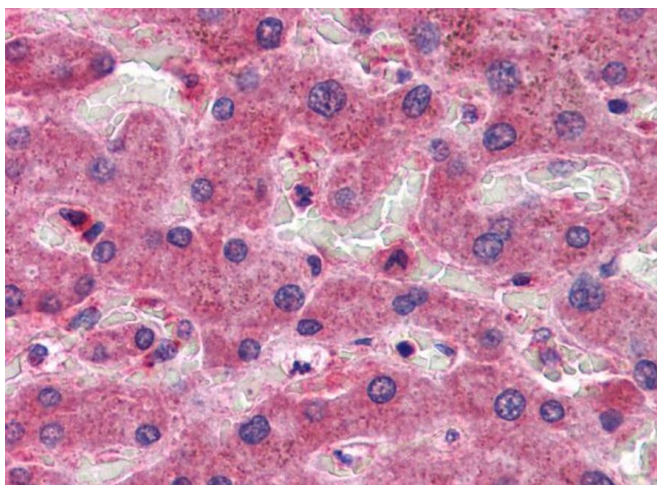
[View online »](#)

Product images:

TA311556 (1ug/ml) staining of A549 lysate (35ug protein in RIPA buffer). Primary incubation was 1 hour. Detected by chemiluminescence.



TA311556 (3.75ug/ml) staining of paraffin embedded Human Skeletal Muscle. Steamed antigen retrieval with citrate buffer pH 6, AP-staining.



TA311556 (3.75ug/ml) staining of paraffin embedded Human Liver. Steamed antigen retrieval with citrate buffer pH 6, AP-staining.