

Product datasheet for **TA311555**

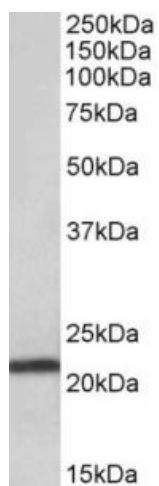
TMEM205 Goat Polyclonal Antibody

Product data:

Product Type:	Primary Antibodies
Applications:	WB
Recommended Dilution:	WB: 0.03-0.1 ug/ml
Reactivity:	Human (Expected from sequence similarity: Mouse, Rat, Dog)
Host:	Goat
Clonality:	Polyclonal
Immunogen:	Peptide with sequence C-PDPYRQLREK, from the internal region of the protein sequence according to NP_212133.1.
Formulation:	Supplied at 0.5 mg/ml in Tris saline, 0.02% sodium azide, pH7.3 with 0.5% bovine serum albumin. Aliquot and store at -20C. Minimize freezing and thawing.
Concentration:	lot specific
Purification:	Purified from goat serum by ammonium sulphate precipitation followed by antigen affinity chromatography using the immunizing peptide.
Conjugation:	Unconjugated
Storage:	Store at -20°C as received.
Stability:	Stable for 12 months from date of receipt.
Gene Name:	transmembrane protein 205
Database Link:	NP_212133 Entrez Gene 235043 Mouse Entrez Gene 300441 Rat Entrez Gene 476707 Dog Entrez Gene 374882 Human Q6UW68
Synonyms:	UNQ501
Protein Families:	Transmembrane



[View online »](#)

Product images:

TA311555 (0.03ug/ml) staining of Human Pancreas lysate (35ug protein in RIPA buffer). Primary incubation was 1 hour. Detected by chemiluminescence.