

Product datasheet for **TA311553**

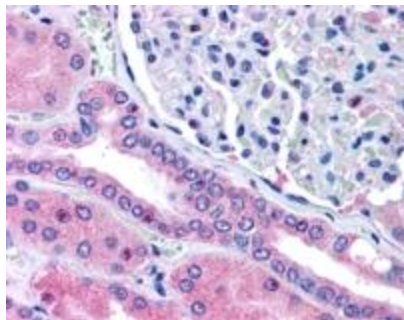
Rhophilin 2 (RHPN2) Goat Polyclonal Antibody

Product data:

Product Type:	Primary Antibodies
Applications:	IHC
Recommended Dilution:	WB: 0.3ug/ml, IHC: 5-10ug/ml
Reactivity:	Human (Expected from sequence similarity: Mouse, Rat, Cow)
Host:	Goat
Clonality:	Polyclonal
Immunogen:	Peptide with sequence C-TNKNRQKSAST, from the internal region of the protein sequence according to NP_149094.3.
Formulation:	Supplied at 0.5 mg/ml in Tris saline, 0.02% sodium azide, pH7.3 with 0.5% bovine serum albumin. Aliquot and store at -20C. Minimize freezing and thawing.
Concentration:	lot specific
Purification:	Purified from goat serum by ammonium sulphate precipitation followed by antigen affinity chromatography using the immunizing peptide.
Conjugation:	Unconjugated
Storage:	Store at -20°C as received.
Stability:	Stable for 12 months from date of receipt.
Gene Name:	rhophilin, Rho GTPase binding protein 2
Database Link:	NP_149094 Entrez Gene 52428 Mouse Entrez Gene 308516 Rat Entrez Gene 85415 Human Q8IUC4
Synonyms:	P76RBE; RHOBP



[View online »](#)

Product images:

(5ug/ml) staining of paraffin embedded Human Kidney. Steamed antigen retrieval with citrate buffer pH 6, AP-staining.