

Product datasheet for **TA311547**

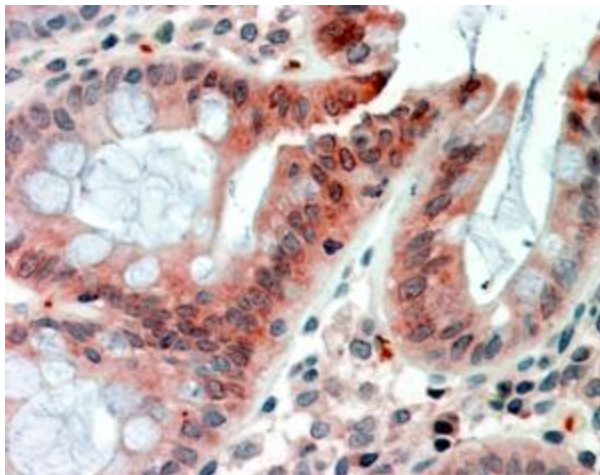
RELM beta (RETNLB) Goat Polyclonal Antibody

Product data:

Product Type:	Primary Antibodies
Applications:	IHC
Recommended Dilution:	WB: 0.1ug/ml, IHC: 2-4ug/ml
Reactivity:	Human
Host:	Goat
Clonality:	Polyclonal
Immunogen:	Peptide with sequence C-DSVMDKKIKDVLNS, from the internal region of the protein sequence according to NP_115968.1.
Formulation:	Supplied at 0.5 mg/ml in Tris saline, 0.02% sodium azide, pH7.3 with 0.5% bovine serum albumin. Aliquot and store at -20C. Minimize freezing and thawing.
Concentration:	lot specific
Purification:	Purified from goat serum by ammonium sulphate precipitation followed by antigen affinity chromatography using the immunizing peptide.
Conjugation:	Unconjugated
Storage:	Store at -20°C as received.
Stability:	Stable for 12 months from date of receipt.
Gene Name:	resistin like beta
Database Link:	NP_115968 Entrez Gene 84666 Human Q9BQ08
Synonyms:	FIZZ1; FIZZ2; HXCP2; RELM-beta; RELMb; RELMbeta; XCP2
Protein Families:	Secreted Protein



[View online »](#)

Product images:

(2.5g/ml) staining of paraffin embedded Human Colon. Steamed antigen retrieval with citrate buffer pH 6, AP-staining.