

Product datasheet for **TA311546**

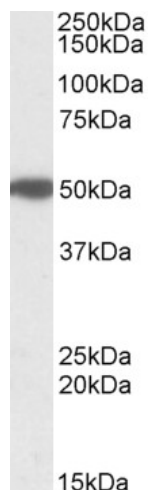
MON1A Goat Polyclonal Antibody

Product data:

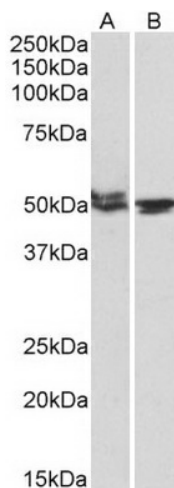
Product Type:	Primary Antibodies
Applications:	WB
Recommended Dilution:	WB: 1-3 µg/ml.
Reactivity:	Human, Mouse, Rat (Expected from sequence similarity: Dog, Cow)
Host:	Goat
Clonality:	Polyclonal
Immunogen:	Peptide with sequence HISYLEPDTDLC, from the internal region of the protein sequence according to NP_115731.2; NP_001135973.1.
Formulation:	Supplied at 0.5 mg/ml in Tris saline, 0.02% sodium azide, pH7.3 with 0.5% bovine serum albumin. Aliquot and store at -20C. Minimize freezing and thawing.
Concentration:	lot specific
Purification:	Purified from goat serum by ammonium sulphate precipitation followed by antigen affinity chromatography using the immunizing peptide.
Conjugation:	Unconjugated
Storage:	Store at -20°C as received.
Stability:	Stable for 12 months from date of receipt.
Gene Name:	MON1 homolog A, secretory trafficking associated
Database Link:	NP_115731 Entrez Gene 72825 Mouse Entrez Gene 315999 Rat Entrez Gene 476619 Dog Entrez Gene 84315 Human Q86VX9
Synonyms:	SAND1



[View online »](#)

Product images:


TA311546 (1 ug/ml) staining of Human Pancreas lysate (35 ug protein in RIPA buffer). Primary incubation was 1 hour. Detected by chemiluminescence.



TA311546 (1 ug/ml) staining of Mouse (A) and Rat (B) Testis lysates (35 ug protein in RIPA buffer). Primary incubation was 1 hour. Detected by chemiluminescence.