

Product datasheet for **TA311544**

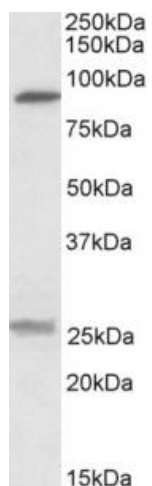
Sodium bicarbonate transporter like protein 11 (SLC4A11) Goat Polyclonal Antibody

Product data:

Product Type:	Primary Antibodies
Applications:	WB
Recommended Dilution:	WB: 0.3-1ug/ml
Reactivity:	Human, Mouse, Rat (Expected from sequence similarity: Dog, Cow)
Host:	Goat
Clonality:	Polyclonal
Immunogen:	Peptide with sequence C-HTSRKYLKLNFKEE, from the internal region of the protein sequence according to NP_114423.1.
Formulation:	Supplied at 0.5 mg/ml in Tris saline, 0.02% sodium azide, pH7.3 with 0.5% bovine serum albumin. Aliquot and store at -20C. Minimize freezing and thawing.
Concentration:	lot specific
Purification:	Purified from goat serum by ammonium sulphate precipitation followed by antigen affinity chromatography using the immunizing peptide.
Conjugation:	Unconjugated
Storage:	Store at -20°C as received.
Stability:	Stable for 12 months from date of receipt.
Gene Name:	solute carrier family 4 member 11
Database Link:	NP_114423 Entrez Gene 269356 Mouse Entrez Gene 311423 Rat Entrez Gene 485796 Dog Entrez Gene 83959 Human Q8NBS3
Synonyms:	BTR1; CDPD1; CHED2; dj794I6.2; NABC1
Protein Families:	Transmembrane



[View online »](#)

Product images:

(0.3ug/ml) staining of Human Kidney lysate (35ug protein in RIPA buffer). Primary incubation was 1 hour. Detected by chemiluminescence.