

Product datasheet for **TA311542**

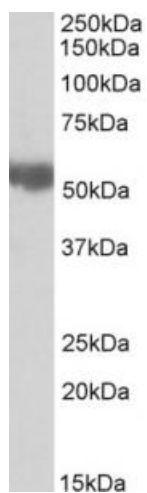
Aldh3a2 Goat Polyclonal Antibody

Product data:

Product Type:	Primary Antibodies
Applications:	WB
Recommended Dilution:	WB: 0.03-0.1ug/ml
Reactivity:	Mouse, Rat
Host:	Goat
Clonality:	Polyclonal
Immunogen:	Peptide with sequence C-KGLKGESVNLRY, from the internal region of the protein sequence according to NP_113919.2.
Formulation:	Supplied at 0.5 mg/ml in Tris saline, 0.02% sodium azide, pH7.3 with 0.5% bovine serum albumin. Aliquot and store at -20C. Minimize freezing and thawing.
Concentration:	lot specific
Purification:	Purified from goat serum by ammonium sulphate precipitation followed by antigen affinity chromatography using the immunizing peptide.
Conjugation:	Unconjugated
Storage:	Store at -20°C as received.
Stability:	Stable for 12 months from date of receipt.
Gene Name:	aldehyde dehydrogenase family 3, subfamily A2
Database Link:	NP_031463 Entrez Gene 65183 Rat Entrez Gene 11671 Mouse P47740
Synonyms:	ALDH10; DKFZp686E23276; FALDH; FLJ20851; OTTHUMP00000065801; SLS



[View online »](#)

Product images:

(0.03ug/ml) staining of Rat Liver lysate (35ug protein in RIPA buffer). Primary incubation was 1 hour. Detected by chemiluminescence.