

Product datasheet for **TA311540**

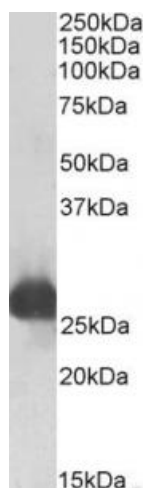
Gsta1 Goat Polyclonal Antibody

Product data:

Product Type:	Primary Antibodies
Applications:	WB
Recommended Dilution:	WB: 0.1-0.3ug/ml
Reactivity:	Rat (Expected from sequence similarity: Pig, Cow)
Host:	Goat
Clonality:	Polyclonal
Immunogen:	Peptide with sequence C-ELDPSALANFPLLK, from the internal region of the protein sequence according to NP_113697.1.
Formulation:	Supplied at 0.5 mg/ml in Tris saline, 0.02% sodium azide, pH7.3 with 0.5% bovine serum albumin. Aliquot and store at -20C. Minimize freezing and thawing.
Concentration:	lot specific
Purification:	Purified from goat serum by ammonium sulphate precipitation followed by antigen affinity chromatography using the immunizing peptide.
Conjugation:	Unconjugated
Storage:	Store at -20°C as received.
Stability:	Stable for 12 months from date of receipt.
Gene Name:	glutathione S-transferase alpha 1
Database Link:	NP_113697 Entrez Gene 24421 Rat P04904
Synonyms:	GST-epsilon; GST2; GSTA1-1; GTH1; MGC131939



[View online »](#)

Product images:

(0.1 ug/ml) staining of Rat Liver lysate (35ug protein in RIPA buffer). Primary incubation was 1 hour. Detected by chemiluminescence.