

Product datasheet for **TA311537**

GERP (TRIM8) Goat Polyclonal Antibody

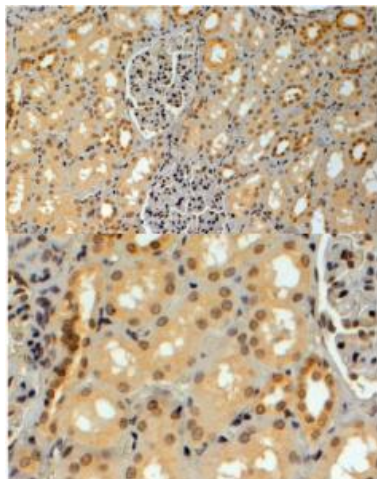
Product data:

Product Type:	Primary Antibodies
Applications:	FC, IF, IHC, PEP-ELISA
Recommended Dilution:	WB: 1ug/ml, IHC: 4-6ug/ml
Reactivity:	Human (Expected from sequence similarity: Mouse, Rat, Dog, Pig)
Host:	Goat
Clonality:	Polyclonal
Immunogen:	Peptide with sequence C-YGQPSTKHYVTS, from the C Terminus of the protein sequence according to NP_112174.2.
Formulation:	Supplied at 0.5 mg/ml in Tris saline, 0.02% sodium azide, pH7.3 with 0.5% bovine serum albumin. Aliquot and store at -20C. Minimize freezing and thawing.
Concentration:	lot specific
Purification:	Purified from goat serum by ammonium sulphate precipitation followed by antigen affinity chromatography using the immunizing peptide.
Conjugation:	Unconjugated
Storage:	Store at -20°C as received.
Stability:	Stable for 12 months from date of receipt.
Gene Name:	tripartite motif containing 8
Database Link:	NP_112174 Entrez Gene 93679 Mouse Entrez Gene 688785 Rat Entrez Gene 486863 Dog Entrez Gene 81603 Human Q9BZR9
Synonyms:	GERP; RNF27



[View online »](#)

Product images:



(4ug/ml) staining of paraffin embedded Human Kidney. Steamed antigen retrieval with citrate buffer pH 6, HRP-staining.