

Product datasheet for **TA311536**

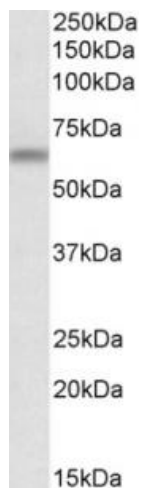
Atg16l1 Goat Polyclonal Antibody

Product data:

Product Type:	Primary Antibodies
Applications:	WB
Recommended Dilution:	WB: 0.01-0.1ug/ml
Reactivity:	Mouse (Expected from sequence similarity: Human, Rat, Dog)
Host:	Goat
Clonality:	Polyclonal
Immunogen:	Peptide with sequence C-KVEKVLKQHSSSIN, from the internal region (near the C Terminus) of the protein sequence according to NP_110430.5; NP_060444.3.
Formulation:	Supplied at 0.5 mg/ml in Tris saline, 0.02% sodium azide, pH7.3 with 0.5% bovine serum albumin. Aliquot and store at -20C. Minimize freezing and thawing.
Concentration:	lot specific
Purification:	Purified from goat serum by ammonium sulphate precipitation followed by antigen affinity chromatography using the immunizing peptide.
Conjugation:	Unconjugated
Storage:	Store at -20°C as received.
Stability:	Stable for 12 months from date of receipt.
Gene Name:	autophagy related 16-like 1 (S. cerevisiae)
Database Link:	NP_084122 Entrez Gene 55054 Human Entrez Gene 363278 Rat Entrez Gene 477412 Dog Entrez Gene 77040 Mouse Q8C0J2
Synonyms:	APG16L; ATG16L; FLJ00045; FLJ10035; FLJ10828; FLJ22677; IBD10; WDR30



[View online »](#)

Product images:

(0.1ug/ml) staining of Mouse Brain lysate (35ug protein in RIPA buffer). Primary incubation was 1 hour. Detected by chemiluminescence.