

Product datasheet for **TA311532**

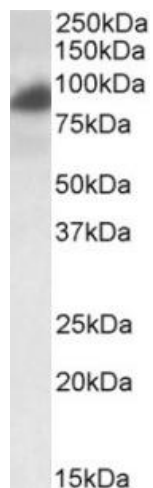
RAB11FIP1 Goat Polyclonal Antibody

Product data:

Product Type:	Primary Antibodies
Applications:	WB
Recommended Dilution:	WB: 0.1-0.3ug/ml
Reactivity:	Human
Host:	Goat
Clonality:	Polyclonal
Immunogen:	Peptide with sequence C-EATKEAKESKKPE, from the internal region of the protein sequence according to NP_079427.3; NP_001002814.1.
Formulation:	Supplied at 0.5 mg/ml in Tris saline, 0.02% sodium azide, pH7.3 with 0.5% bovine serum albumin. Aliquot and store at -20C. Minimize freezing and thawing.
Concentration:	lot specific
Purification:	Purified from goat serum by ammonium sulphate precipitation followed by antigen affinity chromatography using the immunizing peptide.
Conjugation:	Unconjugated
Storage:	Store at -20°C as received.
Stability:	Stable for 12 months from date of receipt.
Gene Name:	RAB11 family interacting protein 1
Database Link:	NP_079427 Entrez Gene 80223 Human Q6WKZ4
Synonyms:	NOEL1A; rab11-FIP1; RCP
Protein Families:	Druggable Genome
Protein Pathways:	Endocytosis



[View online »](#)

Product images:

(0.2ug/ml) staining of HeLa lysate (35ug protein in RIPA buffer). Primary incubation was 1 hour. Detected by chemiluminescence.