

Product datasheet for **TA311531**

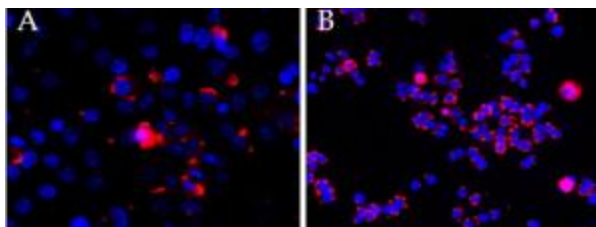
CEP290 Goat Polyclonal Antibody

Product data:

Product Type:	Primary Antibodies
Applications:	IF
Recommended Dilution:	WB: 1ug/ml, IHC: 2-3ug/ml
Reactivity:	Human
Host:	Goat
Clonality:	Polyclonal
Immunogen:	Peptide with sequence C-RNSKHLKQQQYRAEN , from the internal region of the protein sequence according to NP_079390.3.
Formulation:	Supplied at 0.5 mg/ml in Tris saline, 0.02% sodium azide, pH7.3 with 0.5% bovine serum albumin. Aliquot and store at -20C. Minimize freezing and thawing.
Concentration:	lot specific
Purification:	Purified from goat serum by ammonium sulphate precipitation followed by antigen affinity chromatography using the immunizing peptide.
Conjugation:	Unconjugated
Storage:	Store at -20°C as received.
Stability:	Stable for 12 months from date of receipt.
Gene Name:	centrosomal protein 290
Database Link:	NP_079390 Entrez Gene 80184 Human O15078
Synonyms:	3H11Ag; BBS14; CT87; JBTS5; LCA10; MKS4; NPHP6; POC3; rd16; SLSN6



[View online »](#)

Product images:

Data provided by customer: (2.5ug/ml overnight staining of cell lines OPCT-1 (A) and MDA468 (fB) with Alexa Fluor 568 (red) and nuclear counter staining with DAPI (blue).