

Product datasheet for **TA311526**

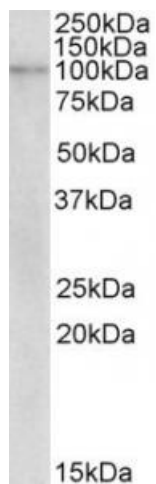
NLRX1 Goat Polyclonal Antibody

Product data:

Product Type:	Primary Antibodies
Applications:	WB
Recommended Dilution:	WB: 1-3ug/ml
Reactivity:	Human (Expected from sequence similarity: Rat)
Host:	Goat
Clonality:	Polyclonal
Immunogen:	Peptide with sequence C-NFSGETLDSTDPSN, from the internal region of the protein sequence according to NP_078894.2; NP_733840.1.
Formulation:	Supplied at 0.5 mg/ml in Tris saline, 0.02% sodium azide, pH7.3 with 0.5% bovine serum albumin. Aliquot and store at -20C. Minimize freezing and thawing.
Concentration:	lot specific
Purification:	Purified from goat serum by ammonium sulphate precipitation followed by antigen affinity chromatography using the immunizing peptide.
Conjugation:	Unconjugated
Storage:	Store at -20°C as received.
Stability:	Stable for 12 months from date of receipt.
Gene Name:	NLR family member X1
Database Link:	NP_078894 Entrez Gene 315599 Rat Entrez Gene 79671 Human Q86UT6
Synonyms:	CLR11.3; DLNB26; NOD5; NOD9; NOD26
Protein Pathways:	RIG-I-like receptor signaling pathway



[View online »](#)

Product images:

(2ug/ml) staining of Human Breast cancer lysate (35ug protein in RIPA buffer). Primary incubation was 1 hour. Detected by chemiluminescence.