

## Product datasheet for **TA311525**

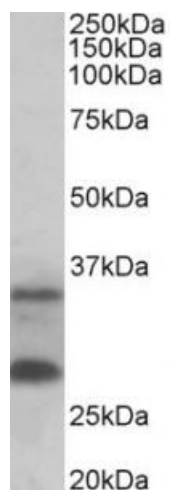
### **C16orf57 (USB1) Goat Polyclonal Antibody**

#### **Product data:**

<b>Product Type:</b>	Primary Antibodies
<b>Applications:</b>	PEP-ELISA, WB
<b>Recommended Dilution:</b>	WB: 0.3-1ug/ml
<b>Reactivity:</b>	Human, Mouse, Rat (Expected from sequence similarity: Pig)
<b>Host:</b>	Goat
<b>Clonality:</b>	Polyclonal
<b>Immunogen:</b>	Peptide with sequence C-TANQVKIYTNQEKT, from the internal region of the protein sequence according to NP_078874.2; NP_001182231.1.
<b>Formulation:</b>	Supplied at 0.5 mg/ml in Tris saline, 0.02% sodium azide, pH7.3 with 0.5% bovine serum albumin. Aliquot and store at -20C. Minimize freezing and thawing.
<b>Concentration:</b>	lot specific
<b>Purification:</b>	Purified from goat serum by ammonium sulphate precipitation followed by antigen affinity chromatography using the immunizing peptide.
<b>Conjugation:</b>	Unconjugated
<b>Storage:</b>	Store at -20°C as received.
<b>Stability:</b>	Stable for 12 months from date of receipt.
<b>Gene Name:</b>	U6 snRNA biogenesis phosphodiesterase 1
<b>Database Link:</b>	<a href="#">NP_078874</a> <a href="#">Entrez Gene 101985 Mouse</a> <a href="#">Entrez Gene 307643 Rat</a> <a href="#">Entrez Gene 79650 Human</a> <a href="#">Q9BQ65</a>
<b>Synonyms:</b>	C16orf57; hUsb1; HVSL1; Mpn1; PN



[View online »](#)

**Product images:**

(0.3ug/ml) staining of Human Skin lysate (35ug protein in RIPA buffer). Primary incubation was 1 hour. Detected by chemiluminescence.