

Product datasheet for **TA311521**

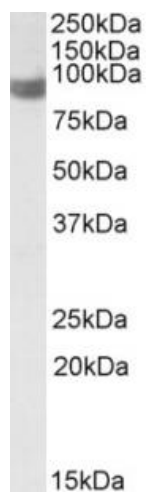
Phospholipase A2 (PLA2G4A) Goat Polyclonal Antibody

Product data:

Product Type:	Primary Antibodies
Applications:	WB
Recommended Dilution:	WB: 1-3ug/ml
Reactivity:	Human, Mouse (Expected from sequence similarity: Rat)
Host:	Goat
Clonality:	Polyclonal
Immunogen:	Peptide with sequence C-QEKTFRQQRKEHIR, from the internal region of the protein sequence according to NP_077734.1.
Formulation:	Supplied at 0.5 mg/ml in Tris saline, 0.02% sodium azide, pH7.3 with 0.5% bovine serum albumin. Aliquot and store at -20C. Minimize freezing and thawing.
Concentration:	lot specific
Purification:	Purified from goat serum by ammonium sulphate precipitation followed by antigen affinity chromatography using the immunizing peptide.
Conjugation:	Unconjugated
Storage:	Store at -20°C as received.
Stability:	Stable for 12 months from date of receipt.
Gene Name:	phospholipase A2 group IVA
Database Link:	NP_077734 Entrez Gene 18783 Mouse Entrez Gene 24653 Rat Entrez Gene 5321 Human P47712
Synonyms:	cPLA2; cPLA2-alpha; PLA2G4
Protein Pathways:	alpha-Linolenic acid metabolism, Arachidonic acid metabolism, Ether lipid metabolism, Fc epsilon RI signaling pathway, Fc gamma R-mediated phagocytosis, Glycerophospholipid metabolism, GnRH signaling pathway, Linoleic acid metabolism, Long-term depression, MAPK signaling pathway, Metabolic pathways, Vascular smooth muscle contraction, VEGF signaling pathway



[View online »](#)

Product images:

(1ug/ml) staining of HeLa lysate (35ug protein in RIPA buffer). Primary incubation was 1 hour. Detected by chemiluminescence.