

## Product datasheet for **TA311517**

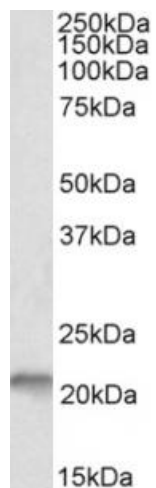
### Nsg1 Goat Polyclonal Antibody

#### Product data:

Product Type:	Primary Antibodies
Applications:	WB
Recommended Dilution:	WB: 0.1-0.3ug/ml
Reactivity:	Mouse (Expected from sequence similarity: Human, Rat, Cow)
Host:	Goat
Clonality:	Polyclonal
Immunogen:	Peptide with sequence EKGTKQPLLEDGFD-C, from the N Terminus of the protein sequence according to NP_077042.2.
Formulation:	Supplied at 0.5 mg/ml in Tris saline, 0.02% sodium azide, pH7.3 with 0.5% bovine serum albumin. Aliquot and store at -20C. Minimize freezing and thawing.
Concentration:	lot specific
Purification:	Purified from goat serum by ammonium sulphate precipitation followed by antigen affinity chromatography using the immunizing peptide.
Conjugation:	Unconjugated
Storage:	Store at -20°C as received.
Stability:	Stable for 12 months from date of receipt.
Gene Name:	neuron specific gene family member 1
Database Link:	<a href="#">NP_035072</a> <a href="#">Entrez Gene 25247 Rat</a> <a href="#">Entrez Gene 27065 Human</a> <a href="#">Entrez Gene 18196 Mouse</a> <a href="#">Q62092</a>
Synonyms:	D4S234; D4S234E; NEEP21; P21



[View online »](#)

**Product images:**

(0.1 ug/ml) staining of fetal Mouse Brain lysate (35ug protein in RIPA buffer). Primary incubation was 1 hour. Detected by chemiluminescence.