

Product datasheet for **TA311513**

SLC26A6 Goat Polyclonal Antibody

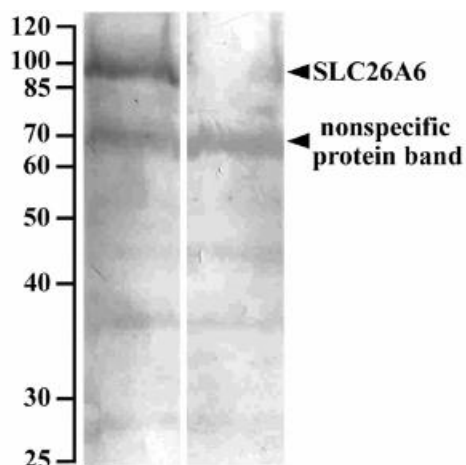
Product data:

Product Type:	Primary Antibodies
Applications:	IF, WB
Recommended Dilution:	WB: 10ug/ml, IHC: 0.1-0.3mg/ml
Reactivity:	Human
Host:	Goat
Clonality:	Polyclonal
Immunogen:	Peptide with sequence C-SAPRTHQWRT, from the internal region of the protein sequence according to NP_075062.2; NP_599025.2; NP_602298.2; NP_001035544.1.
Formulation:	Supplied at 0.5 mg/ml in Tris saline, 0.02% sodium azide, pH7.3 with 0.5% bovine serum albumin. Aliquot and store at -20C. Minimize freezing and thawing.
Concentration:	lot specific
Purification:	Purified from goat serum by ammonium sulphate precipitation followed by antigen affinity chromatography using the immunizing peptide.
Conjugation:	Unconjugated
Storage:	Store at -20°C as received.
Stability:	Stable for 12 months from date of receipt.
Gene Name:	solute carrier family 26 member 6
Database Link:	NP_075062 Entrez Gene 65010 Human Q9BXS9
Synonyms:	DKFZp586E1422
Protein Families:	Transmembrane

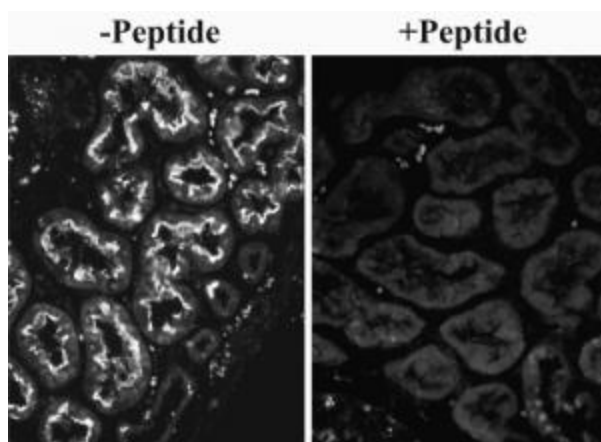


[View online »](#)

Product images:



(10ug/ml) staining of Human renal cortical brush-border membrane lysate (90ug protein denatured at 37°C for 30min) with (B) and without (A) blocking with the immunizing peptide. Primary incubation was overnight at 4C. Detected by NBT/BCIP. Data kindly provided by Dean Karaica, B. Sc., and Ivan Sabolic, M.D., Ph.D., Institute for Medical Research and Occupational Health, Zagreb, Croatia.



Data provided by customer: (0.1 mg/ml) overnight staining of paraffin embedded Human Kidney. Microwaved antigen retrieval with citrate buffer pH 6, CY3-staining.