

Product datasheet for **TA311500**

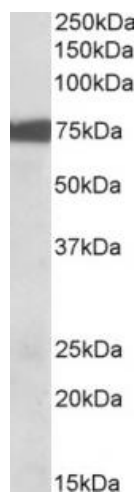
Rps6ka2 Goat Polyclonal Antibody

Product data:

Product Type:	Primary Antibodies
Applications:	WB
Recommended Dilution:	WB: 0.01-0.03ug/ml
Reactivity:	Rat (Expected from sequence similarity: Human, Mouse, Horse)
Host:	Goat
Clonality:	Polyclonal
Immunogen:	Peptide with sequence C-EYLSPNQLSRQDVH, from the C Terminus (near) of the protein sequence according to NP_066958.2; NP_001006933.1.
Formulation:	Supplied at 0.5 mg/ml in Tris saline, 0.02% sodium azide, pH7.3 with 0.5% bovine serum albumin. Aliquot and store at -20C. Minimize freezing and thawing.
Concentration:	lot specific
Purification:	Purified from goat serum by ammonium sulphate precipitation followed by antigen affinity chromatography using the immunizing peptide.
Conjugation:	Unconjugated
Storage:	Store at -20°C as received.
Stability:	Stable for 12 months from date of receipt.
Gene Name:	ribosomal protein S6 kinase polypeptide 2
Database Link:	NP_476469 Entrez Gene 6196 Human Entrez Gene 20112 Mouse Entrez Gene 117269 Rat
Synonyms:	HU-2; MAPKAPK1C; p90-RSK3; pp90RSK3; RSK; RSK-3; RSK3; S6K-alpha; S6K-alpha2



[View online »](#)

Product images:

(0.01ug/ml) staining of Mouse Lung lysate (35ug protein in RIPA buffer). Primary incubation was 1 hour. Detected by chemiluminescence.