

Product datasheet for **TA311491**

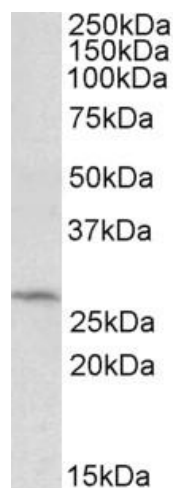
DCUN1D1 Goat Polyclonal Antibody

Product data:

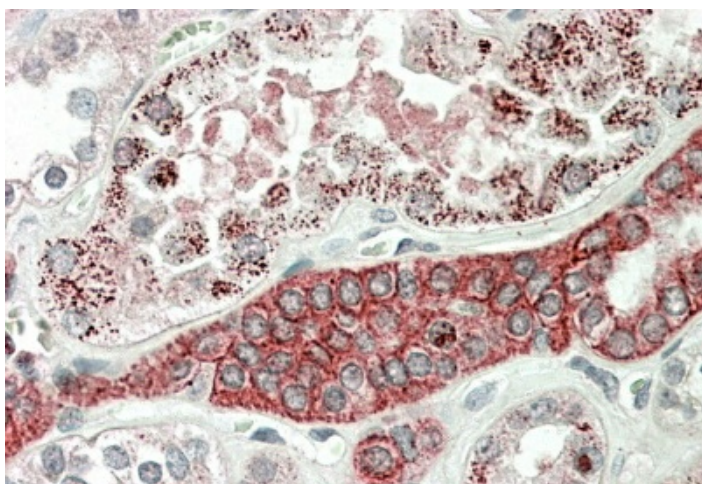
Product Type:	Primary Antibodies
Applications:	IHC, WB
Recommended Dilution:	WB: 0.3-1ug/mL, IHC: 5-10ug/mL
Reactivity:	Human (Expected from sequence similarity: Mouse, Cow)
Host:	Goat
Clonality:	Polyclonal
Immunogen:	Peptide with sequence C-RPQIAGTKSTT, from the C Terminus of the protein sequence according to NP_065691.2.
Formulation:	Supplied at 0.5 mg/ml in Tris saline, 0.02% sodium azide, pH7.3 with 0.5% bovine serum albumin. Aliquot and store at -20C. Minimize freezing and thawing.
Concentration:	lot specific
Purification:	Purified from goat serum by ammonium sulphate precipitation followed by antigen affinity chromatography using the immunizing peptide.
Conjugation:	Unconjugated
Storage:	Store at -20°C as received.
Stability:	Stable for 12 months from date of receipt.
Gene Name:	defective in cullin neddylation 1 domain containing 1
Database Link:	NP_065691 Entrez Gene 114893 Mouse Entrez Gene 54165 Human Q96GG9
Synonyms:	DCNL1; DCUN1L1; RP42; SCCRO; SCRO; Tes3
Protein Families:	Druggable Genome



[View online »](#)

Product images:

(0.5ug/ml) staining of HepG2 lysate (35ug protein in RIPA buffer). Primary incubation was 1 hour. Detected by chemiluminescence.



Anti-DCUN1D1 antibody (5ug/ml) staining of paraffin embedded Human Kidney. Steamed antigen retrieval with citrate buffer pH 6, AP-staining.