

## Product datasheet for **TA311480**

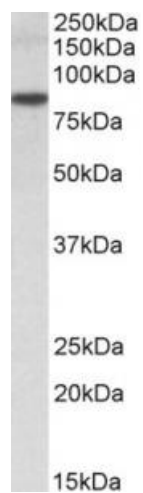
### **RNF98 (TRIM36) Goat Polyclonal Antibody**

#### **Product data:**

<b>Product Type:</b>	Primary Antibodies
<b>Applications:</b>	WB
<b>Recommended Dilution:</b>	WB: 1-3ug/ml
<b>Reactivity:</b>	Human (Expected from sequence similarity: Mouse, Rat)
<b>Host:</b>	Goat
<b>Clonality:</b>	Polyclonal
<b>Immunogen:</b>	Peptide with sequence C-PITAKYLEYQEDM, from the C Terminus of the protein sequence according to NP_061170.2.
<b>Formulation:</b>	Supplied at 0.5 mg/ml in Tris saline, 0.02% sodium azide, pH7.3 with 0.5% bovine serum albumin. Aliquot and store at -20C. Minimize freezing and thawing.
<b>Concentration:</b>	lot specific
<b>Purification:</b>	Purified from goat serum by ammonium sulphate precipitation followed by antigen affinity chromatography using the immunizing peptide.
<b>Conjugation:</b>	Unconjugated
<b>Storage:</b>	Store at -20°C as received.
<b>Stability:</b>	Stable for 12 months from date of receipt.
<b>Gene Name:</b>	tripartite motif containing 36
<b>Database Link:</b>	<a href="#">NP_061170</a> <a href="#">Entrez Gene 28105 Mouse</a> <a href="#">Entrez Gene 291597 Rat</a> <a href="#">Entrez Gene 55521 Human</a> <a href="#">Q9NQ86</a>
<b>Synonyms:</b>	HAPRIN; RBCC728; RNF98
<b>Protein Families:</b>	Druggable Genome



[View online »](#)

**Product images:**

(2ug/ml) staining of Human Amygdala lysate (35ug protein in RIPA buffer). Primary incubation was 1 hour. Detected by chemiluminescence.