

Product datasheet for **TA311479**

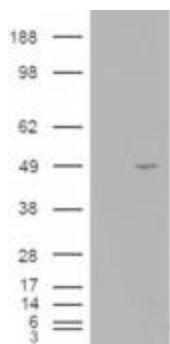
ALS2CR2 (STRADB) Goat Polyclonal Antibody

Product data:

| | |
|-----------------------|---|
| Product Type: | Primary Antibodies |
| Applications: | IHC, WB |
| Recommended Dilution: | WB: 1-3ug/ml, IHC: 3-5ug/ml |
| Reactivity: | Human (Expected from sequence similarity: Dog, Cow) |
| Host: | Goat |
| Clonality: | Polyclonal |
| Immunogen: | Peptide with sequence CDFPDEKDSYWEF, from the C Terminus of the protein sequence according to NP_061041.2; AAF71042.1. |
| Formulation: | Supplied at 0.5 mg/ml in Tris saline, 0.02% sodium azide, pH7.3 with 0.5% bovine serum albumin. Aliquot and store at -20C. Minimize freezing and thawing. |
| Concentration: | lot specific |
| Purification: | Purified from goat serum by ammonium sulphate precipitation followed by antigen affinity chromatography using the immunizing peptide. |
| Conjugation: | Unconjugated |
| Storage: | Store at -20°C as received. |
| Stability: | Stable for 12 months from date of receipt. |
| Gene Name: | STE20-related kinase adaptor beta |
| Database Link: | NP_061041 Entrez Gene 478870 Dog Entrez Gene 55437 Human Q9C0K7 |
| Synonyms: | ALS2CR2; CALS-21; ILPIP; ILPIPA; PAPK; PRO1038 |
| Protein Families: | Druggable Genome, Protein Kinase |



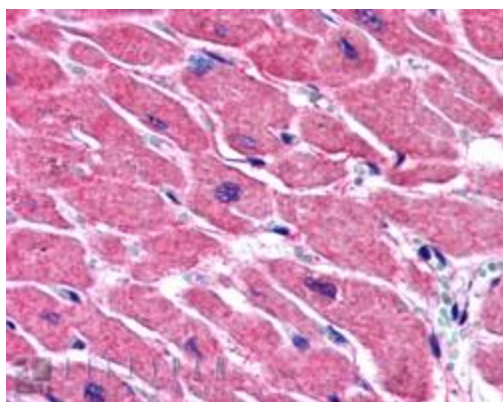
[View online »](#)

Product images:


HEK293 overexpressing ILPIP ([RC203432]) and probed with TA311479 (mock transfection in first Lane).



TA311479 (1ug/ml) staining of Human Heart lysate (35ug protein in RIPA buffer). Primary incubation was 1 hour. Detected by chemiluminescence.



(3.8ug/ml) staining of paraffin embedded Human Heart. Steamed antigen retrieval with citrate buffer pH 6, AP-staining.