

Product datasheet for **TA311478**

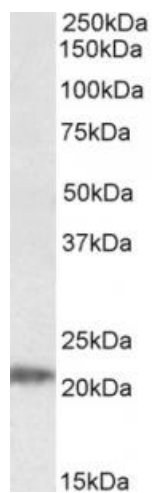
IMP3 Goat Polyclonal Antibody

Product data:

Product Type:	Primary Antibodies
Applications:	WB
Recommended Dilution:	WB: 0.05-0.2ug/ml
Reactivity:	Human (Expected from sequence similarity: Mouse, Rat, Pig, Dog, Cow)
Host:	Goat
Clonality:	Polyclonal
Immunogen:	Peptide with sequence C-QRREDYTRYNQLSR, from the internal region of the protein sequence according to NP_060755.1.
Formulation:	Supplied at 0.5 mg/ml in Tris saline, 0.02% sodium azide, pH7.3 with 0.5% bovine serum albumin. Aliquot and store at -20C. Minimize freezing and thawing.
Concentration:	lot specific
Purification:	Purified from goat serum by ammonium sulphate precipitation followed by antigen affinity chromatography using the immunizing peptide.
Conjugation:	Unconjugated
Storage:	Store at -20°C as received.
Stability:	Stable for 12 months from date of receipt.
Gene Name:	IMP3, U3 small nucleolar ribonucleoprotein
Database Link:	NP_060755 Entrez Gene 102462 Mouse Entrez Gene 315697 Rat Entrez Gene 487656 Dog Entrez Gene 55272 Human Q9NV31
Synonyms:	BRMS2; C15orf12; MRPS4



[View online »](#)

Product images:

(0.05ug/ml) staining of Human Liver lysate (35ug protein in RIPA buffer). Primary incubation was 1 hour. Detected by chemiluminescence.