

## Product datasheet for **TA311474**

### RIF1 Goat Polyclonal Antibody

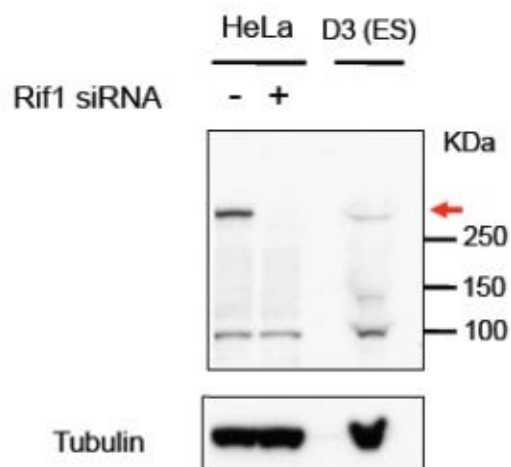
#### Product data:

Product Type:	Primary Antibodies
Applications:	WB
Recommended Dilution:	WB: 1-3ug/ml
Reactivity:	Human, Mouse (Expected from sequence similarity: Dog, Pig, Cow)
Host:	Goat
Clonality:	Polyclonal
Immunogen:	Peptide with sequence C-RNLQSRWRSPHEN, from the C Terminus of the protein sequence according to NP_060621.3; NP_001171134.1.
Formulation:	Supplied at 0.5 mg/ml in Tris saline, 0.02% sodium azide, pH7.3 with 0.5% bovine serum albumin. Aliquot and store at -20C. Minimize freezing and thawing.
Concentration:	lot specific
Purification:	Purified from goat serum by ammonium sulphate precipitation followed by antigen affinity chromatography using the immunizing peptide.
Conjugation:	Unconjugated
Storage:	Store at -20°C as received.
Stability:	Stable for 12 months from date of receipt.
Gene Name:	replication timing regulatory factor 1
Database Link:	<a href="#">NP_060621</a> <a href="#">Entrez Gene 51869 Mouse</a> <a href="#">Entrez Gene 609234 Dog</a> <a href="#">Entrez Gene 55183 Human</a> <a href="#">Q5UIP0</a>
Synonyms:	DKFZp434D1026; DKFZp781N1478; FLJ12870



[View online »](#)

## Product images:



Data provided by customer: (1ug/ml) staining of HeLa and Mouse D3 (ES) lysates (35ug protein in RIPA buffer). Primary incubation was 1 hour. Detected by chemiluminescence.