

## Product datasheet for TA311471

### NODAL Goat Polyclonal Antibody

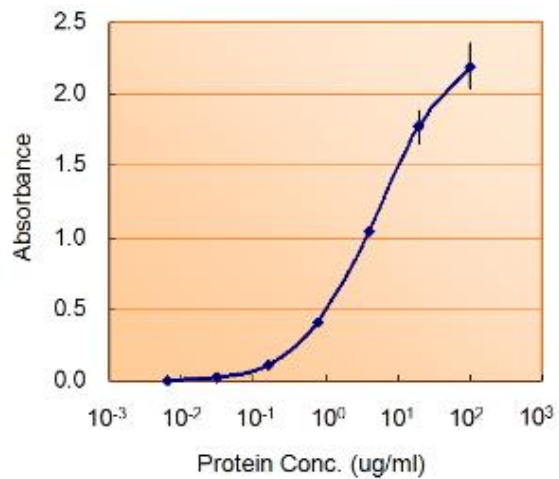
#### Product data:

Product Type:	Primary Antibodies
Applications:	ELISA
Recommended Dilution:	WB: 1-2ug/ml
Reactivity:	Human (Expected from sequence similarity: Mouse, Rat)
Host:	Goat
Clonality:	Polyclonal
Immunogen:	Peptide with sequence ECPNPVGEEFH, from the internal region of the protein sequence according to NP_060525.2.
Formulation:	Supplied at 0.5 mg/ml in Tris saline, 0.02% sodium azide, pH7.3 with 0.5% bovine serum albumin. Aliquot and store at -20C. Minimize freezing and thawing.
Concentration:	lot specific
Purification:	Purified from goat serum by ammonium sulphate precipitation followed by antigen affinity chromatography using the immunizing peptide.
Conjugation:	Unconjugated
Storage:	Store at -20°C as received.
Stability:	Stable for 12 months from date of receipt.
Gene Name:	nodal growth differentiation factor
Database Link:	<a href="#">NP_060525</a> <a href="#">Entrez Gene 18119 Mouse</a> <a href="#">Entrez Gene 294503 Rat</a> <a href="#">Entrez Gene 4838 Human</a> <a href="#">Q96S42</a>
Synonyms:	HTX5
Protein Families:	Cancer stem cells, Druggable Genome, Embryonic stem cells, ES Cell Differentiation/IPS, Induced pluripotent stem cells, Secreted Protein, Stem cell relevant signaling - TGFb/BMP signaling pathway
Protein Pathways:	TGF-beta signaling pathway



[View online »](#)

## Product images:



(1.5ug/ml) as the reporter with a capture rabbit antibody at 5ug/ml.