

Product datasheet for **TA311469**

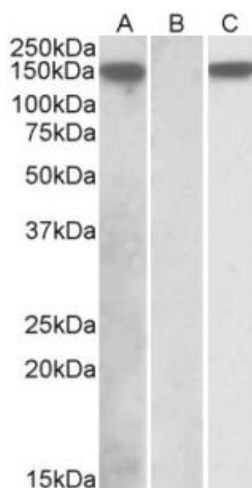
NALP2 (NLRP2) Goat Polyclonal Antibody

Product data:

Product Type:	Primary Antibodies
Applications:	WB
Recommended Dilution:	WB: 1-2ug/ml
Reactivity:	Human
Host:	Goat
Clonality:	Polyclonal
Immunogen:	Peptide with sequence C-TEKHHPWAERPSSHD, from the C Terminus of the protein sequence according to NP_060322.1.
Formulation:	Supplied at 0.5 mg/ml in Tris saline, 0.02% sodium azide, pH7.3 with 0.5% bovine serum albumin. Aliquot and store at -20C. Minimize freezing and thawing.
Concentration:	lot specific
Purification:	Purified from goat serum by ammonium sulphate precipitation followed by antigen affinity chromatography using the immunizing peptide.
Conjugation:	Unconjugated
Storage:	Store at -20°C as received.
Stability:	Stable for 12 months from date of receipt.
Gene Name:	NLR family, pyrin domain containing 2
Database Link:	NP_060322 Entrez Gene 55655 Human Q9NX02
Synonyms:	CLR19.9; NALP2; NBS1; PAN1; PYPAF2



[View online »](#)

Product images:

HEK293 lysate (10ug protein in RIPA buffer) overexpressing Human NLRP2 with DDK (FLAG) tag probed with TA311469 (1ug/ml) in Lane A and probed with anti-DDK Tag (1:1000) in Lane C. Mock-transfected HEK293 probed with TA311469 (1mg/ml) in Lane B. Primary incubations were for 1 hour. Detected by chemiluminescence.