

Product datasheet for **TA311468**

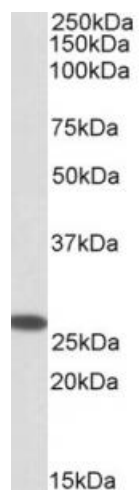
CHCHD3 Goat Polyclonal Antibody

Product data:

Product Type:	Primary Antibodies
Applications:	WB
Recommended Dilution:	WB: 0.3-1ug/ml
Reactivity:	Human (Expected from sequence similarity: Mouse, Rat, Dog, Cow, Sheep)
Host:	Goat
Clonality:	Polyclonal
Immunogen:	Peptide with sequence C-RSSEFYRVTTTEQYQ, from the internal region of the protein sequence according to NP_060282.1.
Formulation:	Supplied at 0.5 mg/ml in Tris saline, 0.02% sodium azide, pH7.3 with 0.5% bovine serum albumin. Aliquot and store at -20C. Minimize freezing and thawing.
Concentration:	lot specific
Purification:	Purified from goat serum by ammonium sulphate precipitation followed by antigen affinity chromatography using the immunizing peptide.
Conjugation:	Unconjugated
Storage:	Store at -20°C as received.
Stability:	Stable for 12 months from date of receipt.
Gene Name:	coiled-coil-helix-coiled-coil-helix domain containing 3
Database Link:	NP_060282 Entrez Gene 66075 Mouse Entrez Gene 296966 Rat Entrez Gene 607574 Dog Entrez Gene 54927 Human Q9NX63
Synonyms:	MINOS3; PPP1R22



[View online »](#)

Product images:

(0.3ug/ml) staining of Human Placenta lysate (35ug protein in RIPA buffer). Primary incubation was 1 hour. Detected by chemiluminescence.