

## Product datasheet for **TA311466**

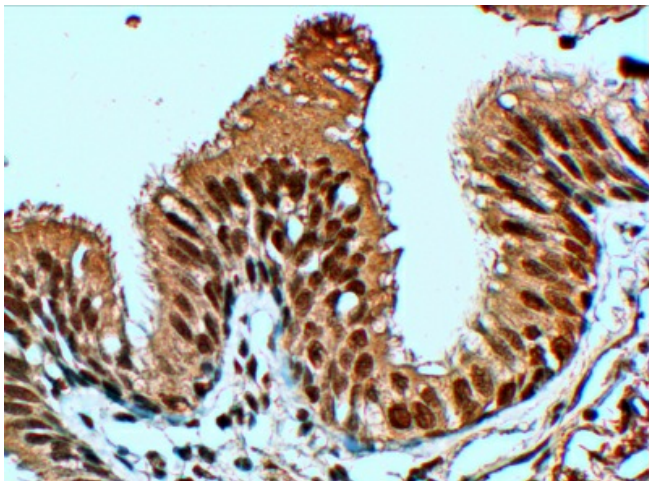
### FBXL12 Goat Polyclonal Antibody

#### Product data:

Product Type:	Primary Antibodies
Applications:	IHC
Recommended Dilution:	WB: 1ug/ml, IHC: 4-6ug/ml
Reactivity:	Human (Expected from sequence similarity: Mouse, Rat, Dog)
Host:	Goat
Clonality:	Polyclonal
Immunogen:	Peptide with sequence RACPKESMDWWM, from the C Terminus of the protein sequence according to NP_060173.1.
Formulation:	Supplied at 0.5 mg/ml in Tris saline, 0.02% sodium azide, pH7.3 with 0.5% bovine serum albumin. Aliquot and store at -20C. Minimize freezing and thawing.
Concentration:	lot specific
Purification:	Purified from goat serum by ammonium sulphate precipitation followed by antigen affinity chromatography using the immunizing peptide.
Conjugation:	Unconjugated
Storage:	Store at -20°C as received.
Stability:	Stable for 12 months from date of receipt.
Gene Name:	F-box and leucine-rich repeat protein 12
Database Link:	<a href="#">NP_060173</a> <a href="#">Entrez Gene 30843 Mouse</a> <a href="#">Entrez Gene 313782 Rat</a> <a href="#">Entrez Gene 484965 Dog</a> <a href="#">Entrez Gene 54850 Human</a> <a href="#">Q9NXX8</a>
Synonyms:	Fbl12
Protein Families:	Druggable Genome



[View online »](#)

**Product images:**

TA311466 (4ug/ml) staining of paraffin embedded Human Lung. Steamed antigen retrieval with citrate buffer pH 6, HRP-staining.