

## Product datasheet for **TA311455**

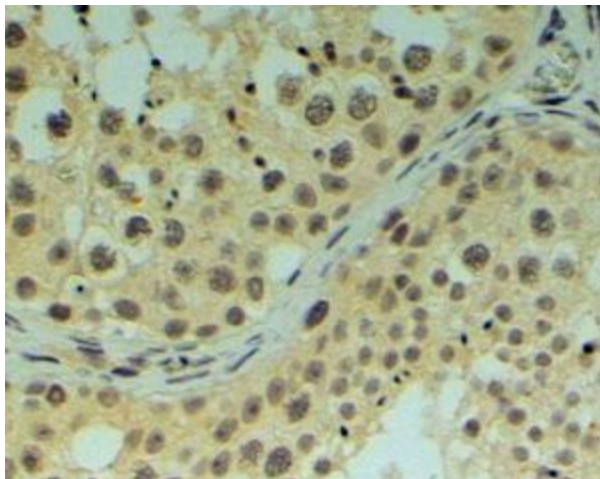
### REV1 Goat Polyclonal Antibody

#### Product data:

Product Type:	Primary Antibodies
Applications:	IHC
Recommended Dilution:	WB: 1.5ug/ml, IHC: 4-6ug/ml
Reactivity:	Human (Expected from sequence similarity: Mouse, Rat, Dog, Cow)
Host:	Goat
Clonality:	Polyclonal
Immunogen:	Peptide with sequence C-VLQQTYGSTLKVT, from the C Terminus of the protein sequence according to NP_057400.1; NP_001032961.1.
Formulation:	Supplied at 0.5 mg/ml in Tris saline, 0.02% sodium azide, pH7.3 with 0.5% bovine serum albumin. Aliquot and store at -20C. Minimize freezing and thawing.
Concentration:	lot specific
Purification:	Purified from goat serum by ammonium sulphate precipitation followed by antigen affinity chromatography using the immunizing peptide.
Conjugation:	Unconjugated
Storage:	Store at -20°C as received.
Stability:	Stable for 12 months from date of receipt.
Gene Name:	REV1, DNA directed polymerase
Database Link:	<a href="#">NP_057400</a> <a href="#">Entrez Gene 56210 Mouse</a> <a href="#">Entrez Gene 316344 Rat</a> <a href="#">Entrez Gene 481337 Dog</a> <a href="#">Entrez Gene 51455 Human</a> <a href="#">Q9UBZ9</a>
Synonyms:	AIBP80; REV1L
Protein Families:	Druggable Genome



[View online »](#)

**Product images:**

(4ug/ml) staining of paraffin embedded Human Testis. Steamed antigen retrieval with Tris/EDTA buffer pH 9, HRP-staining.