

Product datasheet for **TA311451**

Galanin (GAL) Goat Polyclonal Antibody

Product data:

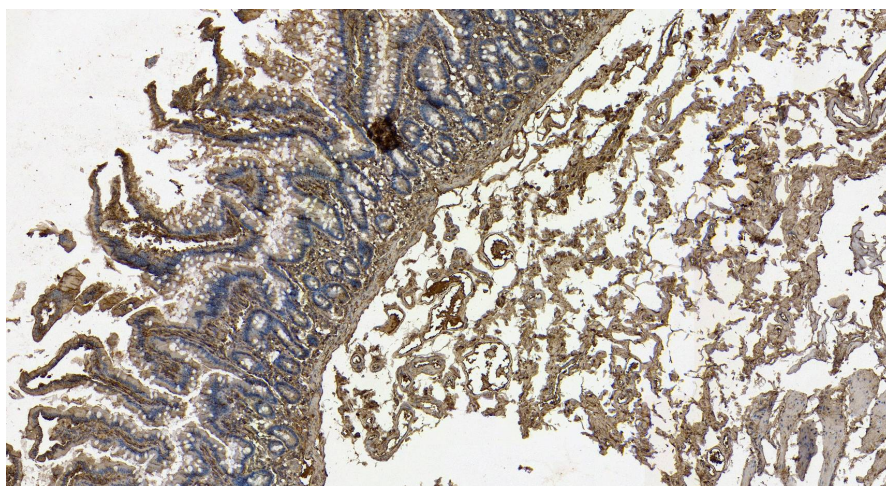
Product Type:	Primary Antibodies
Applications:	IHC, PEP-ELISA, WB
Recommended Dilution:	WB: 1-3ug/ml, IHC: 0.2-0.5ug/ml
Reactivity:	Human, Mouse (Expected from sequence similarity: Rat, Cow)
Host:	Goat
Clonality:	Polyclonal
Immunogen:	Peptide with sequence C-HRSFSDKNGLTSK, from the internal region of the protein sequence according to NP_057057.2.
Formulation:	Supplied at 0.5 mg/ml in Tris saline, 0.02% sodium azide, pH7.3 with 0.5% bovine serum albumin. Aliquot and store at -20C. Minimize freezing and thawing.
Concentration:	lot specific
Purification:	Purified from goat serum by ammonium sulphate precipitation followed by antigen affinity chromatography using the immunizing peptide.
Conjugation:	Unconjugated
Storage:	Store at -20°C as received.
Stability:	Stable for 12 months from date of receipt.
Gene Name:	galanin and GMAP prepropeptide
Database Link:	NP_057057 Entrez Gene 14419 Mouse Entrez Gene 29141 Rat Entrez Gene 51083 Human P22466
Synonyms:	GAL-GMAP; GALN; GLNN; GMAP
Protein Families:	Secreted Protein, Transmembrane



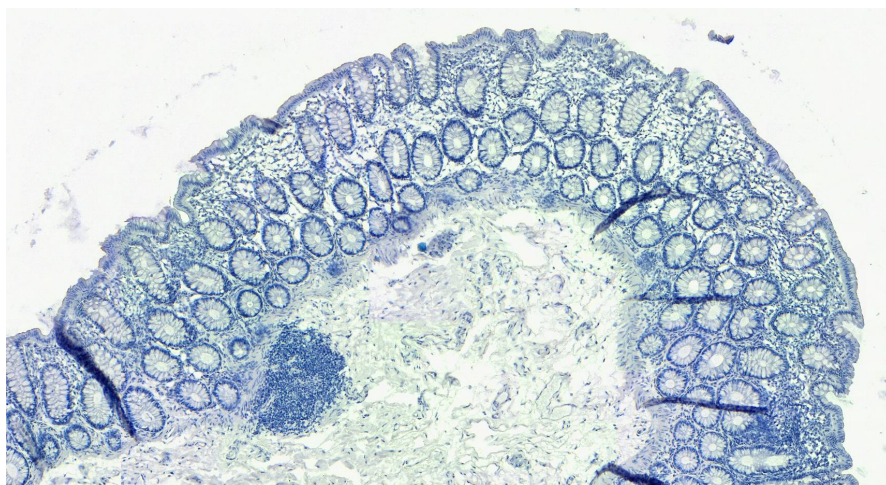
[View online »](#)

Product images:

TA311451 (1 μ g/ml) staining of Mouse Brain (A) Small Intestine (B) and Stomach (C) lysate (35 μ g protein in RIPA buffer). Detected by chemiluminescence.



TA311451 (8 μ g/ml) staining of paraffin embedded Human Small Intestine. Heat induced antigen retrieval with citrate buffer pH 6, HRP-staining.



TA311451 Negative Control showing staining of paraffin embedded Human Small Intestine, with no primary antibody.