

Product datasheet for **TA311449**

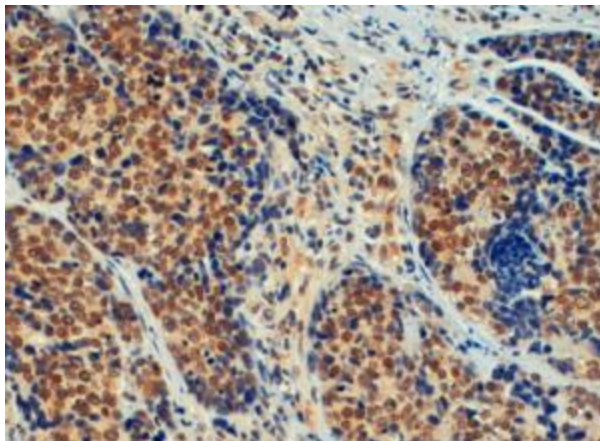
TIF1 alpha (TRIM24) Goat Polyclonal Antibody

Product data:

Product Type:	Primary Antibodies
Applications:	IHC
Recommended Dilution:	WB: 1ug/ml, IHC: 4-6ug/ml
Reactivity:	Human (Expected from sequence similarity: Cow)
Host:	Goat
Clonality:	Polyclonal
Immunogen:	Peptide with sequence C-KRLKSIEERQLLK, from the C Terminus of the protein sequence according to NP_056989.2; NP_003843.3.
Formulation:	Supplied at 0.5 mg/ml in Tris saline, 0.02% sodium azide, pH7.3 with 0.5% bovine serum albumin. Aliquot and store at -20C. Minimize freezing and thawing.
Concentration:	lot specific
Purification:	Purified from goat serum by ammonium sulphate precipitation followed by antigen affinity chromatography using the immunizing peptide.
Conjugation:	Unconjugated
Storage:	Store at -20°C as received.
Stability:	Stable for 12 months from date of receipt.
Gene Name:	tripartite motif containing 24
Database Link:	NP_056989 Entrez Gene 8805 Human O15164
Synonyms:	hTIF1; PTC6; RNF82; TF1A; TIF1; TIF1A; TIF1ALPHA
Protein Families:	Druggable Genome, Protein Kinase, Transcription Factors



[View online »](#)

Product images:

(4ug/ml) staining of paraffin embedded Human Breast cancer. Steamed antigen retrieval with citrate buffer pH 6, HRP-staining.