

Product datasheet for **TA311441**

Poldip2 Goat Polyclonal Antibody

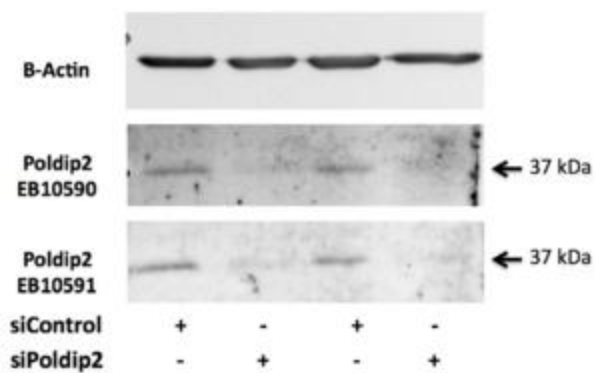
Product data:

Product Type:	Primary Antibodies
Applications:	WB
Recommended Dilution:	WB: 1-3ug/ml
Reactivity:	Rat (Expected from sequence similarity: Human, Mouse, Dog, Cow)
Host:	Goat
Clonality:	Polyclonal
Immunogen:	Peptide with sequence C-RFERPDGSHFDVR, from the internal region (near C terminus) of the protein sequence according to NP_056399.1.
Formulation:	Supplied at 0.5 mg/ml in Tris saline, 0.02% sodium azide, pH7.3 with 0.5% bovine serum albumin. Aliquot and store at -20C. Minimize freezing and thawing.
Concentration:	lot specific
Purification:	Purified from goat serum by ammonium sulphate precipitation followed by antigen affinity chromatography using the immunizing peptide.
Conjugation:	Unconjugated
Storage:	Store at -20°C as received.
Stability:	Stable for 12 months from date of receipt.
Gene Name:	polymerase (DNA) delta interacting protein 2
Database Link:	NP_001099286 Entrez Gene 26073 Human Entrez Gene 67811 Mouse Entrez Gene 491162 Dog Entrez Gene 287544 Rat
Synonyms:	DKFZp586F1524; p38; PDIP38; POLD4



[View online »](#)

Product images:



Data provided by customer: (0.5ug/ml) staining of Rat VSMC lysate (35ug protein in RIPA buffer). Primary incubation was overnight at 4C. Detected by chemiluminescence.